

Our intention is to have in-person meetings going forward. For the time being, we will hold the City Committee Meetings, Plan Commission, Council and most others at the Community Room at 933 Michigan Avenue. This in-person location will meet the legal requirement for our open meetings.

We will have a virtual option available, but the technology for the hybrid style meeting may not be reliable all of the time.

CITY OF STEVENS POINT
BOARD OF PUBLIC WORKS MEETING
July 14, 2025 - 6:15 PM
(or immediately following previously scheduled meeting)

Community Room
933 Michigan Avenue, Stevens Point, WI

OR

Zoom Teleconferencing

Meeting ID: 831 9742 4142 | Passcode: 926754

By Computer: <https://us02web.zoom.us/j/83197424142?pwd=eIK8p94j8zDeqsbUwx4s3tT3nFCVaK.1>

By Phone: +1-312-626-6799 (US Chicago)

(A quorum of the City Council may attend this meeting)

AGENDA

Roll Call

Informational

1. Director's Report
 - a. Division and Church Streets Reconstruction Project.

Discussion and Possible Action

2. To award the Pavement Maintenance Project #25-104 to Fahrner Asphalt Sealers of Wisconsin in an amount not to exceed \$195,988.75.
3. To approve the Relocation Order and Right of Way Plat to extend the Business 51 Reconstruction Project limits from Franklin Street to Briggs Street.

Adjourn

Meeting Rider

Any person who has special needs while attending this meeting or needing agenda materials for this meeting should contact the City Clerk as soon as possible to ensure a reasonable accommodation can be made. The City Clerk can be reached by telephone at (715) 346-1569, TDD # 346-1556 or by mail at 1515 Strongs Ave., Stevens Point, WI 54481.

Copies of ordinances, resolutions, reports and minutes of the committee meetings are on file at the office of the City Clerk for inspection during normal business hours from 7:30 a.m. to 4:00p.m.

City of Stevens Point
1515 Strongs Avenue
Stevens Point, WI 54481



Public Works

Engineering Department:
Phone: 715-346-1561
Fax: 715-346-1650

Streets Department:
Phone: 715-346-1537
Fax: 715-346-1687

July 9, 2025

DIRECTOR OF PUBLIC WORKS REPORT
Scott Beduhn

1. Engineering Division

- **Country Club Drive:**
 - Construction is anticipated to begin in August and be complete in the early fall.
 - The City has a streetlight and control cabinet in conflict with the proposed improvement that will be relocated before construction.
- **Division and Church Streets Reconstruction Project:**
 - AECOM continues working to complete final designs for the North Segment (North Point Drive to Fourth Avenue) and the far South Segment (South City Limits to Michigan Avenue), which are both at an approximate 80 percent design stage.
 - Real estate acquisition for both projects is underway.
 - WPS is preparing for the relocation of overhead utilities throughout the North Segment, which should occur later this year.
 - During the review of the 60 percent design plans, there were concerns over utility conflicts related to the Moses Creek crossing of Division Street, which is located just north of Franklin Street. After much discussion between staff, AECOM, and Gremmer, it was agreed that the best overall approach to address the concerns was to extend the work south to Briggs Street, which will eliminate the concerns as the proposed utilities can tie into existing utilities.
 - AECOM has submitted a change order for the additional work related to the extension of the project with is being presented at this month's Finance Committee meeting for approval.
 - A new Relocation Order and Right of Way Plat is also being presented this month to both Plan Commission and Board of Public Works for consideration.
- **2024 Street Improvement Project (Northside):**
 - All remaining work is anticipated to be complete by the middle of July.
 - In addition, the contractor is addressing warranty issues on the work completed last year.
- **2025 Street Improvement Project (Washington Ave):**
 - The contractor currently has three utility crews on the project is moving along very quickly. As a result, road building on Washington between Grant and Second should begin very soon.
- **2025 Street Improvement Project (Madison/Monroe):**
 - The contractor began construction the week of June 16, 2025 and is currently utilities on Monroe Street.

- **East Park Commerce Center Badger Avenue Extension:**
 - Due to materials and electrical service installation delays, the lighting system is not yet operable. All the other work is complete.
 - The remaining materials have recently been delivered, and the contractor is coordinating the electrical service installation with WPS.
- **Forest Creek Subdivision:**
 - Nothing new to report
- **Curb Gutter and Sidewalk Repair Project:**
 - Nothing new to report.
- **Fall Paving Project:**
 - Staff is evaluating funding availability and exploring options for a fall paving project.
 - Currently staff is looking at several potential corridors, however most of the focus has been on Green Avenue.
- **Pavement Maintenance Project:**
 - Bids for the annual pavement maintenance project were received on July 8th. The apparent low bidder was Farhner Asphalt Sealers out of Plover, WI. Staff's recommendation for contract award is included in this month's Board of Public Works meeting packet.
- **Downtown Concrete Joint Repair Project:**
 - Staff is working on the limits for a concrete joint repair project in the downtown area. The last joint repair project was done in 2018.
- **West River Drive:**
 - Using the public input received at the second PIM, AECOM is currently preparing a final technical memo of the traffic evaluation
- **West Zinda Bridge:**
 - The work is complete, and the bridge has been reopened to traffic.
- **Michigan Avenue Underpass:**
 - The City's consultant is preparing a scope of work for the project's next phases.
 - With road funding outside of Business 51, staff is working to complete the underdrain and pavement repairs in 2026.
- **Hoover Road Intersection Signalizations:**
 - All preliminary work before the delivery of the signal equipment, including the installation of buried conduits and signal bases, is complete.
 - The anticipated delivery timeframe for the signal equipment remains mid-August at which time the contractor will return to finish the installation.
 - It is anticipated that the new signals will be functional around the middle of September.
- **Park Street Railroad Crossing Closure investigation:**
 - Staff is beginning to evaluate truck route options and potential roadway improvements for the possible rail crossing closure.
 - After completing some preliminary engineering, staff anticipates holding a public informational meeting this summer.

- **SS4A Grant – Demonstration Activities (DAs):**
 - The SS4A stakeholder members (Demonstration Activities subcommittee) have identified three Demonstration Activities to be completed within the City of Stevens as part of the SS4A grant. The three activities include:
 - Temporary curb extensions at the intersection of Fourth Avenue and Isadore Street.
 - Buffered bike lanes along Water Street between Riverview Avenue and Kwik Trip.
 - Buffered bike lanes along Michigan Avenue between Patch Street and Dixon Street.
 - These DAs will remain in place during the summer months and will be removed this fall.
 - Public Works staff will be installing delineators to create the temporary curb extensions and buffered bike lanes and will also be conducting both pre- and post-installation data collection.

- **Additional Miscellaneous Projects:**
 - Engineering Staff continues working on proposed 2026 and 2027 roadway projects, including gathering survey data, researching right of way, and preparing bidding documents.
 - Engineering staff have been working with university staff on several fronts to improve the University environment. These include:
 - Discussions in conjunction with Community Development on the future of the old Maytag lot.
 - Discussions regarding the reconstruction of Fourth Avenue through campus, which is tentatively scheduled for reconstruction in 2027.
 - Staff continue to work with the Utility Department on various water, sanitary, stormwater, and fiber projects.
 - Staff continue to work with the Community Development Department on various projects. These projects include:
 - Shopko redevelopment
 - Convent redevelopment

2. Streets Division- June

- **Continued Operations:**
 - Garbage and Recycling
 - Street Sign Compliance and replacement
 - Street Light Maintenance
 - Street Patching/Trumbull
 - Drop off Site Operations

- **Staffing:**
 - We are happy to report that the streets department is fully staffed.

- **Summer Maintenance crews:**
 - **Patching/Trumbull:** The Trumbull crew has completed W. Clark Street and is now working at the south end of Church Street. They will continue north along Church and Division Streets.
 - **Concrete:** Several hot days resulted in multiple concrete blowouts throughout the city. The concrete crew was pulled away from other work to address these. They have since returned to work along West Clark Street, continuing with utility patches and other repairs as needed.

- **Paint:** The paint crew is approximately 90% complete with yellow pavement markings (excluding long-line striping). Crosswalks in the vicinity of Seramur Park have also been completed.
- **Sweeping:** The first full citywide sweep was completed at the end of May. As of this report, approximately 40% of the second round of sweeping has been completed. This percentage does not include spot sweeping done after Trumbull and patching operations, which are completed following work in those areas.
- **Crack Fill:** The crack fill crew is about 45% complete with the 2025 crack fill program.

- **Equipment maintenance/garage :**
 - There were two notable incidents involving city vehicles, both with no fault attributed to city staff. One vehicle was T-boned, and another was close to a lightning strike, resulting in electrical issues. Fleet staff are also actively working on preparations for the 2026 fleet budget.

Respectfully submitted,

Superintendent Johnson

City of Stevens Point
1515 Strongs Avenue
Stevens Point, WI 54481




Public Works

Engineering Department:
Phone: 715-346-1561
Fax: 715-346-1650

Streets Department:
Phone: 715-346-1537
Fax: 715-346-1687

July 9, 2025

To: Board of Public Works

From: Scott Beduhn, Director of Public Works 

Re: Contract Award Recommendation
2025 Pavement Maintenance
Project 25-104

Bids for the annual Pavement Maintenance Project were received on July 8, 2025. Two bids were received for this project. The bids are summarized in the attached bid tabulation.

The bids, submitted by Fahrner Asphalt Sealers, LLC out of Plover and Scott Construction, Inc out of Lake Delton, were both within the Engineer's estimate for the work. The low bid was submitted by Fahrner Asphalt Sealers. The City has regularly worked with Fahrner on asphalt maintenance and repair issues and staff believes they are qualified and capable of performing the work.

It is staff's recommendation that the project be awarded to Fahrner Asphalt Sealers, LLC in an amount not to exceed \$195,988.75, including a 15 percent contingency.

If there are any questions, please do not hesitate to contact me.

Thank you.

Z:\90 - MEETINGS\2025 - MEETINGS\07 - July\Memo - Award Pavement Maintenance Project 25-104.doc

2025 Pavement Maintenance Project #25-104

Owner: City of Stevens Point

07/08/2025 10:00 AM CDT

Line Item	Item Code	Item Description	UofM	Quantity	Fahrner Asphalt Sealers		Scott Construction	
					Unit Price	Extension	Unit Price	Extension
1	SPV.0105.01	Supplemental Traffic Control	LS	1	\$4,500.00	\$4,500.00	\$1,500.00	\$1,500.00
2	SPV.0105.02	Remove and Replace Pavement Markings	LS	1	\$26,850.00	\$26,850.00	\$28,190.00	\$28,190.00
3	SPV.0180.01	Seal Coat	SY	27,500	\$2.25	\$61,875.00	\$2.18	\$59,950.00
4	SPV.0108.02	Seal Coat Special (Fog Seal)	SY	27,500	\$0.44	\$12,100.00	\$0.51	\$14,025.00
5	SPV.0108.03	Seal Coat Special (GSB-88)	SY	62,000	\$1.05	\$65,100.00	\$1.58	\$97,960.00
Base Bid Total:						\$170,425.00		\$201,625.00
Base bid with Contingency:						\$195,988.75		\$231,868.75

City of Stevens Point
1515 Strongs Avenue
Stevens Point, WI 54481



Public Works

Engineering Department:
Phone: 715-346-1561
Fax: 715-346-1650

Streets Department:
Phone: 715-346-1537
Fax: 715-346-1687

July 9, 2025

To: Board of Public Works

From: Scott Beduhn, Director of Public Works

Re: Relocation Order and Right of Way Plat
Briggs to Franklin
Business 51 Reconstruction Project

As was mentioned at last month's Board of Public Works meeting, utility conflicts with the Moses Creek pipeline (which crosses Division Street just north of Franklin Street) have resulted in a change to the project limits. While the original north segment reconstruction project intended to extend south through the intersection of Fourth Avenue (to approximately Franklin Street), the new project limits will now extend south to Briggs Street, where the proposed utilities can be connected to existing utilities.

As part of the change to project limits, additional real estate must be acquired to facilitate the construction. As such AECOM has prepared the attached Relocation Order and Right of Way Plat for the portion of Division Street from Franklin Street to Briggs Street.

The Relocation Order and Right of Way Plat were approved at the July 7, 2025 Plan Commission meeting and are also being presented to the Board of Public Works for your consideration. Staff respectfully requests approval of the Relocation Order and Right of Way Plat, which will then allow us to proceed with real estate acquisition.

If there are any questions, please do not hesitate to contact me.

Thank you

Z:\90 - MEETINGS\2025 - MEETINGS\07 - July\Memo - Relocation Order and ROW Plat.docx

RELOCATION ORDER

lpa1708 08/2011 (Replaces LPA3006)

Project 60730575-21	Road name Business 51 Urban Reconstruction Briggs Street to Franklin Street	Highway Business 51 (Division Street)	County Portage
Right of way plat date 6/26/2025	Plat sheet number(s) 4.01 through 4.04	Previously approved Relocation Order date	

Description of termini of project:

Beginning at a point on the reference line which is 513.30 feet South and 1332.81 feet West of the Northeast Corner of Section 32, T24N, R8E and ending at a point 348.58 feet North and 1331.55 feet West of the Southeast Corner of Section 29, T24N, R8E.

Beginning Coordinates: Y = 203663.304, X = 165488.334, Sta. 124+30.82

Ending Coordinates: Y = 204525.181, X = 165489.591, Sta. 132+92.69

Wisconsin County Coordinate System (WCCS), Portage County - NAD83 (1997)

To properly establish, lay out, widen, enlarge, extend, construct, reconstruct, improve, or maintain a portion of the highway designated above, it is necessary to relocate or change and acquire certain lands or interests in lands as shown on the right of way plat for the above project.

To effect this change, pursuant to authority granted under Sections 83.07 and 83.08, Wisconsin Statutes, the City of Stevens Point orders that:

1. The said road is laid out and established to the lines and widths as shown on the plat.
2. The required lands or interests in lands as shown on the plat shall be acquired by: City of Stevens Point
3. This order supersedes and amends any previous order issued by the: City of Stevens Point

Approved: Mike Wiza, Mayor

Date

Attest: Susan Pagel, Clerk

Date

R/W PROJECT NUMBER 60730575-21	SHEET NUMBER 1	TOTAL SHEETS 4
FEDERAL PROJECT NUMBER		
PLAT OF RIGHT OF WAY REQUIRED FOR BUSINESS 51 URBAN RECONSTRUCTION BRIGGS STREET - FRANKLIN STREET		
BUSINESS 51 / DIVISION STREET		PORTAGE COUNTY
CONSTRUCTION PROJECT NUMBER		

CONVENTIONAL SYMBOLS

SECTION LINE		SECTION CORNER SYMBOL		R/W MONUMENT (TO BE SET)	
QUARTER LINE		SECTION CORNER MONUMENT		NON-MONUMENTED R/W POINT	
SIXTEENTH LINE		FOUND SURVEY MONUMENT (SEE FOUND MONUMENT TABLE)			
NEW REFERENCE LINE		GEODETIC SURVEY MONUMENT			
NEW R/W LINE		SIGN		PERMITTED SIGN	
EXISTING R/W OR HE LINE		ACCESS RESTRICTED BY ACQUISITION			
PROPERTY LINE		NO ACCESS (BY STATUTORY AUTHORITY)			
LOT, TIE & OTHER MINOR LINES		ACCESS RESTRICTED (BY PREVIOUS PROJECT OR CONTROL)			
EXISTING CENTERLINE		NO ACCESS (NEW HIGHWAY)			
CORPORATE LIMITS		PARCEL NUMBER		UTILITY NUMBER	
NEW R/W (FEE OR HE) (HATCHING VARIES BY OWNER)		PARALLEL OFFSETS			
TEMPORARY LIMITED EASEMENT AREA					
EASEMENT AREA (PERMANENT LIMITED OR RESTRICTED DEVELOPMENT)					
BUILDING TO BE REMOVED					
BRIDGE					
CULVERT					

CONVENTIONAL UTILITY SYMBOLS

WATER	
GAS	
TELEPHONE	
OVERHEAD TRANSMISSION LINES	
ELECTRIC	
CABLE TELEVISION	
FIBER OPTIC	
SANITARY SEWER	
STORM SEWER	
COMBINED SEWER	
ELECTRIC TOWER	
TRANSMISSION STRUCTURES	

ELECTRIC POLE		NON-COMPENSABLE	
TELEPHONE POLE			
PEDESTAL (LABEL TYPE)			
(TV, TEL, ELEC, ETC.)			

CONVENTIONAL ABBREVIATIONS

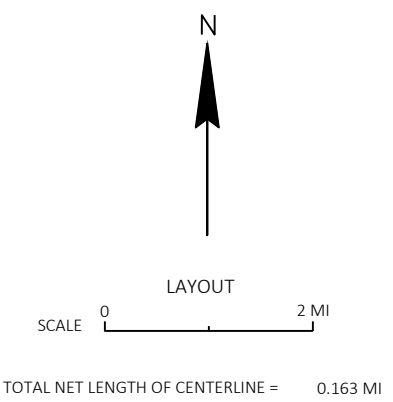
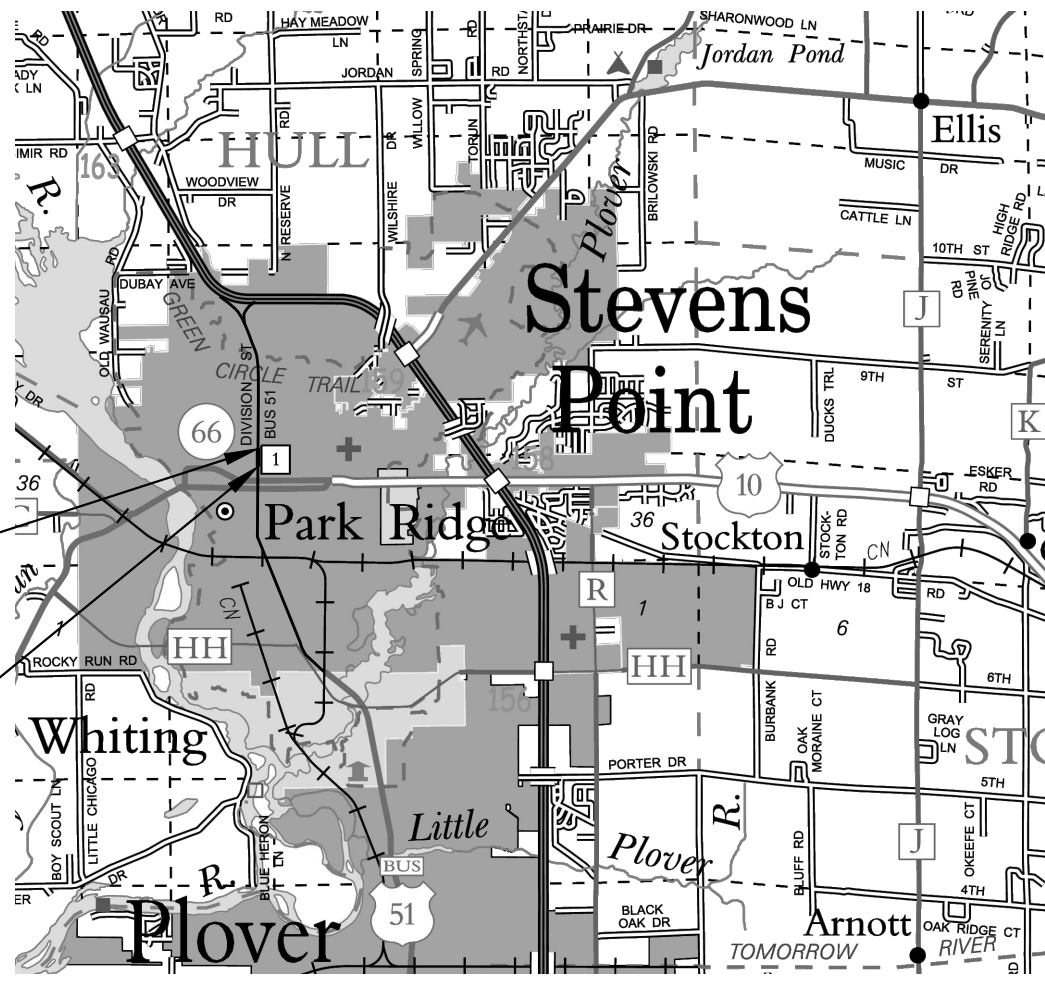
ACCESS RIGHTS	AR	RECORDED AS	(100')
ACRES	AC	REEL / IMAGE	R/I
ALUMINUM	ALUM	REFERENCE LINE	R/L
AND OTHERS	ET AL	REMAINING	REM
BLOCK	BLK	RESTRICTIVE DEVELOPMENT EASEMENT	RDE
CENTERLINE	C/L		
CERTIFIED SURVEY MAP	CSM	RIGHT	RT
CONCRETE	CONC	RIGHT OF WAY	R/W
COUNTY TRUNK HIGHWAY	CTH	SECTION	SEC
CORNER	COR	SEPTIC VENT	SEPV
DOCUMENT NUMBER	DOC	SQUARE FEET	SF
EASEMENT	EASE	STATE TRUNK HIGHWAY	STH
EXISTING	EX	STATION	STA
GAS VALVE	GV	TELEPHONE PEDESTAL	TP
GRID NORTH	GN	TRANSPORTATION PROJECT PLAT	TPP
IDENTIFICATION	ID	UNITED STATES HIGHWAY	USH
LEFT	LT	VOLUME	V
MONUMENT	MON		
NATIONAL GEODETIC SURVEY NUMBER	NGS		
OUTLOT	OL		
PAGE	P		
POINT OF TANGENCY	PT		
POINT OF BEGINNING	POB		
POINT OF CURVATURE	PC		
POINT OF COMPOUND CURVE	PCC		
POINT OF INTERSECTION	PI		
PROPERTY LINE	PL		

CURVE DATA ABBREVIATIONS

LONG CHORD	LCH
LONG CHORD BEARING	LCB
RADIUS	R
DEGREE OF CURVE	D
DELTA ANGLE	Δ/DELTA
LENGTH OF CURVE	L
TANGENT	T
DIRECTION AHEAD	DA
DIRECTION BACK	DB

END RELOCATION ORDER
 STATION 132+92.69
 348.58' NORTH AND 1331.55' WEST
 OF THE SOUTHEAST CORNER OF
 SECTION 29, T24N, R8E.

BEGIN RELOCATION ORDER
 STATION 124+30.82
 513.30' SOUTH AND 1332.81' WEST
 OF THE NORTHEAST CORNER OF
 SECTION 32, T24N, R8E.



NOTES:

POSITIONS SHOWN ON THIS PLAT ARE WISCONSIN COUNTY COORDINATE SYSTEM COORDINATES (WCCS), PORTAGE COUNTY, NAD83 (1997) IN US SURVEY FEET, AND IS ALSO THE CITY OF STEVENS POINT COORDINATE SYSTEM. VALUES SHOWN ARE GRID COORDINATES, GRID BEARINGS, AND GRID DISTANCES. GRID DISTANCES MAY BE USED AS GROUND DISTANCES.

ALL NEW RIGHT-OF-WAY AND PERMANENT EASEMENT MONUMENTS WILL BE TYPE 2 (TYPICALLY 3/4" X 24" IRON REBARS), UNLESS OTHERWISE NOTED, AND WILL BE PLACED PRIOR TO THE COMPLETION OF THE PROJECT.

DIMENSIONING FOR THE NEW RIGHT-OF-WAY IS MEASURED ALONG AND PERPENDICULAR TO THE NEW REFERENCE LINES.

RIGHT-OF-WAY BOUNDARIES ARE DEFINED WITH COURSES OF THE PERIMETER OF THE HIGHWAY LANDS REFERENCED TO THE U.S. PUBLIC LAND SURVEY SYSTEM OR OTHER "SURVEYS" OF PUBLIC RECORD.

FOR THE CURRENT ACCESS/DRIVEWAY INFORMATION, CONTACT THE PLANNING UNIT OF THE CITY OF STEVENS POINT.

PARCEL AND UTILITY IDENTIFICATION NUMBERS MAY NOT POINT TO ALL AREAS OF ACQUISITION, AS NOTED ON THE DETAIL PAGES.

INFORMATION FOR THE BASIS OF EXISTING HIGHWAY RIGHT-OF-WAY POINTS OF REFERENCE AND ACCESS CONTROL ARE LISTED ON THE DETAIL PAGES.

ORIGINAL PLAT PREPARED BY

AECOM

SIGNATURE: *Donald J. Buza*
 DONALD J. BUZA, PLS-2338

DATE: 6/26/2025

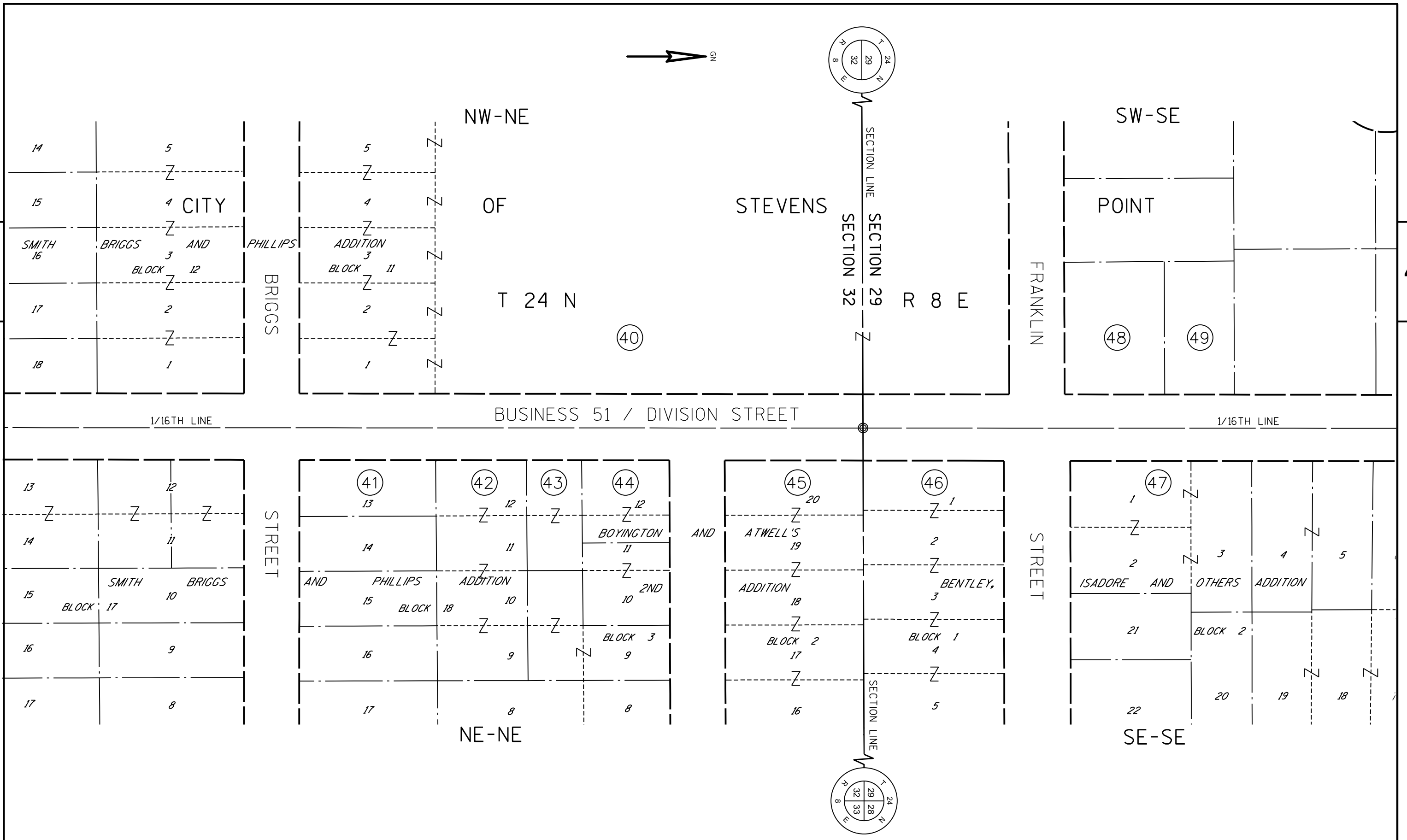
THIS PLAT IS A GRAPHIC REPRESENTATION AND IS FOR REFERENCE PURPOSES ONLY. DEEDS MUST BE CHECKED TO DETERMINE PROPERTY BOUNDARIES AND ACCESS RIGHTS.

CITY OF STEVENS POINT

APPROVED FOR THE CITY OF STEVENS POINT

DATE: _____
 Mike Wiza, Mayor

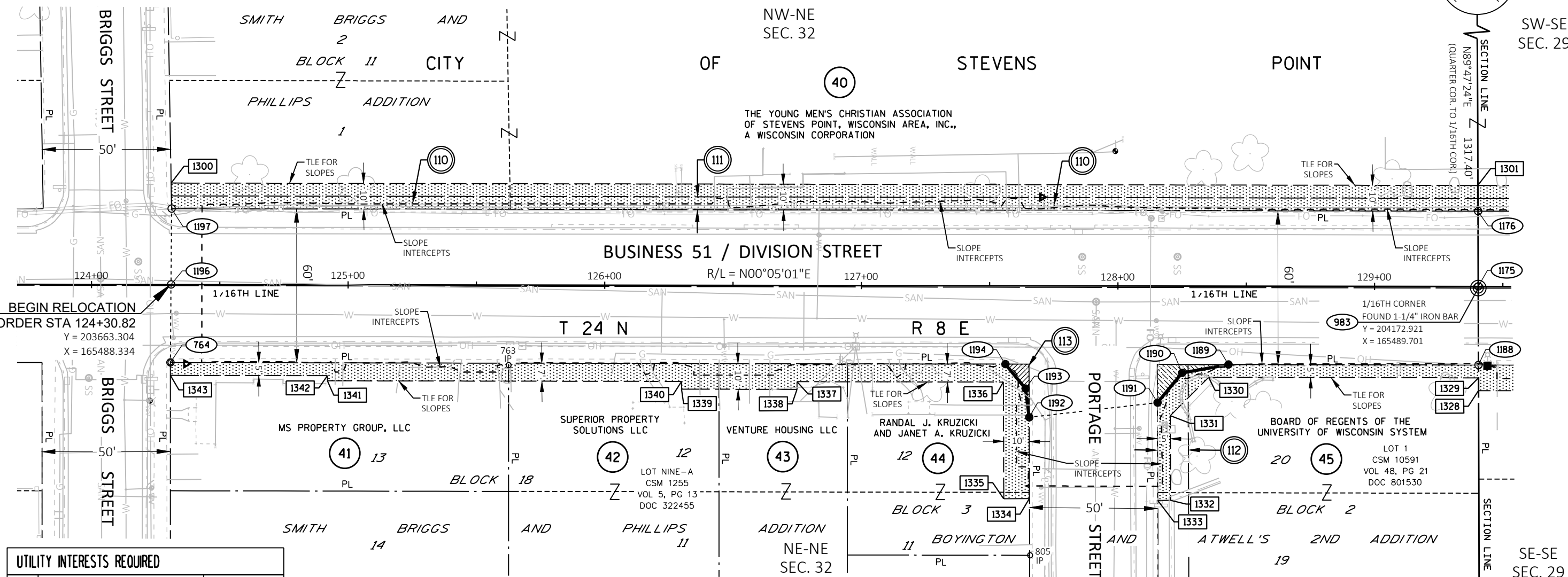
REVISION DATE



REVISION DATE	DATE 6/26/2025	SCALE, FEET	HWY: BUSINESS 51 / DIVISION STREET	STATE R/W PROJECT NUMBER 60730575-21	PLAT SHEET 4.02
	GRID FACTOR N/A		COUNTY: PORTAGE	CONSTRUCTION PROJECT NUMBER	PS&E SHEET _____

NOTES: EXISTING RIGHT-OF-WAY FOR BUS 51 ESTABLISHED FROM SMITH BRIGGS AND PHILLIPS ADDITION, BOYINGTON AND ATWELL'S 2ND ADDITION, CSM 1255, AND CSM 10591.

PER COUNTY RECORDS
(NOT RECOVERED)
Y = 204168.092
X = 164172.310



UTILITY INTERESTS REQUIRED		
UTILITY NUMBER	OWNER(S)	INTEREST REQUIRED
110	WIN TECHNOLOGY	RELEASE OF RIGHTS
111	WISCONSIN PUBLIC SERVICE CORP.	RELEASE OF RIGHTS
112	WISCONSIN PUBLIC SERVICE CORPORATION, CHARTER COMMUNICATIONS, WISCONSIN BELL INC. D/B/A AT&T-WISCONSIN	RELEASE OF RIGHTS
113	WISCONSIN PUBLIC SERVICE CORP.	RELEASE OF RIGHTS

- 110 WIN TECHNOLOGY NO RECORD EASEMENT (FIBER OPTIC) PARCEL 40
- 111 WISCONSIN PUBLIC SERVICE CORP. EASEMENT DOC 749300 PARCEL 40
- 112 WISCONSIN PUBLIC SERVICE CORPORATION, CHARTER COMMUNICATIONS, WISCONSIN BELL INC. D/B/A AT&T-WISCONSIN EASEMENT DOC 804314 PARCEL 45
- 113 WISCONSIN PUBLIC SERVICE CORP. NO RECORD EASEMENT (GAS) PARCEL 44

RW COORDINATE TABLE			
POINT	Y	X	
764	203663.260	165518.735	
1175	204172.919	165489.077	
1176	204172.811	165459.701	
1188	204173.004	165519.701	
1189	204075.600	165519.517	
1190	204057.517	165522.807	
1191	204047.900	165534.369	
1192	203997.919	165540.115	
1193	203996.524	165528.886	
1194	203988.621	165519.352	
1196	203663.492	165488.334	
1197	203663.719	165458.736	

RW COURSE TABLE			
COURSE	BEARING	DISTANCE	
979-983	S89°50'29"W	1331.45'	
979-1188	S89°50'29"W	1301.45'	
1188-983	N89°50'29"E	30.00'	
983-1175	S89°47'24"W	0.62'	
1175-1176	S89°47'24"W	29.38'	
1176-1177	N00°01'37"E	123.57'	
1177-1178	N56°38'05"W	15.85'	
1178-1179	N02°42'51"E	50.06'	
1179-1180	N53°48'13"E	13.51'	
1180-1181	N52°02'33"E	37.54'	
1181-1182	N52°02'33"E	38.59'	
1182-1183	S04°11'56"E	33.80'	
1183-1184	S00°05'09"E	6.26'	
1184-1185	S24°17'59"E	10.61'	
1185-1186	S05°00'07"E	60.22'	
1186-1187	S47°47'42"W	16.41'	
1187-1188	S00°01'37"W	116.25'	
1188-1189	S00°06'31"W	97.40'	
1189-1190	S10°18'43"E	18.38'	
1190-1191	S50°14'58"E	15.04'	
1191-1192	S06°33'26"E	50.31'	
1192-1193	S82°55'11"W	11.32'	
1193-1194	S50°20'36"W	12.38'	
1194-764	S00°06'31"W	325.36'	
764-1196	N89°33'43"W	30.40'	
1196-1197	N89°33'43"W	29.60'	
1197-1176	N00°06'31"E	509.09'	

TLE STATION & OFFSET TABLE			
POINT	STATION	OFFSET	
1300	124+31.00	-39.60'	
1301	129+40.23	-39.38'	
1328	129+40.60	40.62'	
1329	129+40.58	35.62'	
1330	128+35.43	35.58'	
1331	128+20.50	50.57'	
1332	128+20.66	83.57'	
1333	128+15.66	83.60'	
1334	127+65.66	82.98'	
1335	127+55.66	83.03'	
1336	127+55.44	37.54'	
1337	126+75.00	37.51'	
1338	126+75.00	40.51'	
1339	126+30.00	40.49'	
1340	126+30.00	37.49'	
1341	124+92.00	37.43'	
1342	124+92.00	35.43'	
1343	124+30.82	35.40'	

TLE COURSE TABLE			
COURSE	BEARING	DISTANCE	
1197-1300	S89°00'39"W	10.00'	
1300-1301	N00°06'31"E	509.23'	
1188-1329	N89°50'29"E	5.00'	
1329-1330	S00°06'31"W	105.15'	
1330-1331	S45°02'25"E	21.16'	
1331-1332	N89°48'39"E	33.00'	
1332-1333	S00°11'21"E	5.00'	
1333-1191	S89°48'39"W	38.12'	
1192-1334	N89°48'39"E	31.69'	
1334-1335	S00°11'21"E	10.00'	
1335-1336	S89°48'39"W	45.48'	
1336-1337	S00°06'31"W	80.44'	
1337-1338	S89°54'59"E	3.00'	
1338-1339	S00°06'31"W	45.00'	
1339-1340	N89°54'59"W	3.00'	
1340-1341	S00°06'31"W	138.00'	
1341-1342	N89°54'59"W	2.00'	
1342-1343	S00°06'31"W	61.18'	
1343-764	N89°59'00"W	5.00'	

SCHEDULE OF LANDS & INTERESTS REQUIRED							
PARCEL NUMBER	SHEET NUMBER(S)	OWNER(S)	INTEREST REQUIRED	NEW	R/W SF REQUIRED EXISTING	TOTAL	TLE SF
40	4.03, 4.04	THE YOUNG MEN'S CHRISTIAN ASSOCIATION OF STEVENS POINT, WISCONSIN AREA, INC., A WISCONSIN CORPORATION	FEE, TLE	58	-----	58	6599
41	4.03	MS PROPERTY GROUP, LLC	TLE	-----	-----	-----	800
42	4.03	SUPERIOR PROPERTY SOLUTIONS LLC	TLE	-----	-----	-----	618
43	4.03	VENTURE HOUSING LLC	TLE	-----	-----	-----	441
44	4.03	RANDAL J. KRUZICKI AND JANET A. KRUZICKI	FEE, TLE	58	-----	58	892
45	4.03	BOARD OF REGENTS OF THE UNIVERSITY OF WISCONSIN SYSTEM	FEE, TLE	118	-----	118	860
46	4.04	THE CITY OF STEVENS POINT, A MUNICIPAL CORPORATION OF PORTAGE COUNTY, WISCONSIN	FEE, TLE	67	-----	67	1237
47	4.04	UNIVERSITY OF WISCONSIN STEVENS POINT CREDIT UNION	FEE, TLE	103	-----	103	1310
48	4.04	CEDARCREST II LLC	FEE, TLE	43	-----	43	1096
49	4.04	LOIS MESHAK	TLE	-----	-----	-----	417

R/W STATION & OFFSET TABLE			
POINT	STATION	OFFSET	
764	124+30.82	30.40'	
983	129+40.44	0.62'	
1175	129+40.43	-0.00'	
1176	129+40.28	-29.38'	
1188	129+40.56	30.52'	
1189	128+43.16	30.58'	
1190	128+25.06	33.90'	
1191	128+15.48	45.47'	
1192	127+65.51	51.29'	
1193	127+64.10	40.07'	
1194	127+56.18	30.54'	
1196	124+31.00	0.00'	
1197	124+31.19	-29.60'	

EXISTING MONUMENTS			
POINT	Y	X	DESCRIPTION
763	203795.048	165519.773	1" PIPE
764	SEE RW COORDINATE TABLE		1" PIPE
805	203998.245	165593.908	1.25" PIPE

REVISION DATE	DATE 6/26/2025	SCALE, FEET	HWY: BUSINESS 51 / DIVISION STREET	STATE R/W PROJECT NUMBER 60730575-21	PLAT SHEET 4.03
	GRID FACTOR N/A		COUNTY: PORTAGE	CONSTRUCTION PROJECT NUMBER	PS&E SHEET E

PER COUNTY RECORDS
(NOT RECOVERED)
Y = 204168.092
X = 164172.310

NOTES: EXISTING RIGHT-OF-WAY FOR BUS 51 ESTABLISHED FROM
BENTLEY ISADORE & OTHERS ADDITION, CSM 710, AND CSM 7893.
SEE SHEET 4.03 FOR SCHEDULE OF LANDS & INTERESTS REQUIRED.

POINT	Y	X	DESCRIPTION
820	204525.111	165519.728	1.25" PIPE
821	204509.588	165460.054	1" PIPE

COURSE	BEARING	DISTANCE
979-983	S89°50'29"W	1331.45'
979-1188	S89°50'29"W	1301.45'
1188-983	S89°50'29"W	30.00'
983-1175	S89°47'24"W	0.62'
1175-1176	S89°47'24"W	29.38'
1176-1177	N00°01'37"E	123.57'
1177-1178	N56°38'05"W	15.85'
1178-1179	N02°42'51"E	50.06'
1179-1180	N53°48'13"E	13.51'
1180-1181	N52°02'33"E	37.54'
1181-1182	N52°02'33"E	38.59'
1182-1183	S04°11'56"E	33.80'
1183-1184	S00°05'09"E	6.26'
1184-1185	S24°17'59"E	10.61'
1185-1186	S05°00'07"E	60.22'
1186-1187	S47°47'42"W	16.41'
1187-1188	S00°01'37"W	116.25'

POINT	Y	X
1175	204172.919	165489.077
1176	204172.811	165459.701
1177	204296.384	165459.759
1178	204305.102	165446.520
1179	204355.110	165448.891
1180	204363.086	165459.790
1181	204386.176	165489.388
1182	204409.909	165519.812
1183	204376.200	165522.287
1184	204369.938	165522.296
1185	204360.272	165526.661
1186	204300.281	165531.911
1187	204289.257	165519.756
1188	204173.004	165519.701

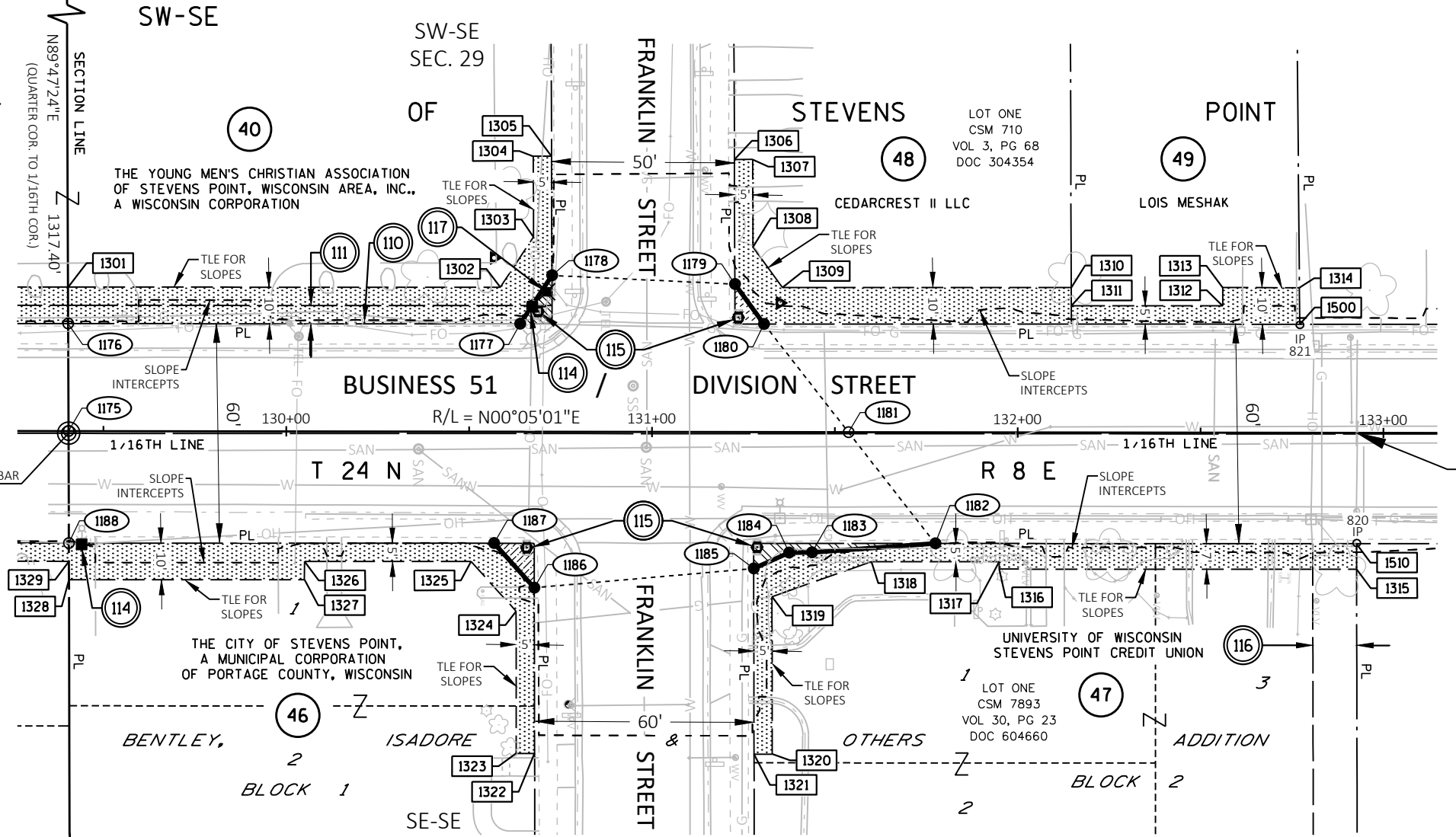
POINT	STATION	OFFSET
983	129+40.44	0.62'
1175	129+40.43	-0.00'
1176	129+40.28	-29.38'
1177	130+63.85	-29.50'
1178	130+72.55	-42.75'
1179	131+22.56	-40.45'
1180	131+30.56	-29.57'
1181	131+53.69	-0.00'
1182	131+77.47	30.39'
1183	131+43.76	32.91'
1184	131+37.50	32.93'
1185	131+27.84	37.31'
1186	130+67.86	42.65'
1187	130+56.82	30.51'
1188	129+40.56	30.62'

COURSE	BEARING	DISTANCE
1301-1302	N00°01'37"E	118.22'
1302-1303	N56°38'05"W	16.49'
1303-1304	S89°48'27"W	22.05'
1304-1305	N00°11'33"W	5.00'
1305-1178	N89°48'27"E	32.61'
1179-1306	S89°48'27"W	34.08'
1306-1307	N00°11'33"W	5.00'
1307-1308	N89°48'27"E	23.95'
1308-1309	N53°48'13"E	13.69'
1309-1310	N00°01'37"E	78.95'
1310-1311	N89°48'27"E	5.00'
1311-1312	N00°01'37"E	41.41'
1312-1313	N89°54'59"W	5.00'
1313-1314	N00°01'37"E	20.95'
1314-1500	N89°29'39"E	10.00'
1500-1180	S00°01'37"W	146.50'
1182-1510	N00°01'37"E	115.20'
1510-1315	N89°52'23"E	7.00'
1315-1316	S00°01'37"W	97.69'
1316-1317	N89°54'59"W	2.00'
1317-1318	S00°01'37"W	35.00'
1318-1319	S19°23'12"E	28.78'
1319-1320	N89°54'20"E	43.05'
1320-1321	S00°05'40"E	5.00'
1321-1185	S89°54'20"W	50.76'
1186-1322	N89°54'20"E	45.31'
1322-1323	S00°05'40"E	5.00'
1323-1324	S89°54'20"W	38.91'
1324-1325	S47°47'42"W	18.31'
1325-1326	S00°01'37"W	45.55'
1326-1327	S89°54'59"E	5.00'
1327-1328	S00°01'37"W	64.40'
1328-1329	S89°50'29"W	5.00'
1328-1188	S89°50'29"W	10.00'

POINT	STATION	OFFSET
1301	129+40.23	-39.38'
1302	130+58.45	-39.49'
1303	130+67.50	-53.28'
1304	130+67.40	-75.33'
1305	130+72.40	-75.36'
1306	131+22.40	-74.53'
1307	131+27.40	-74.55'
1308	131+27.52	-50.61'
1309	131+35.62	-39.57'
1310	132+14.57	-39.65'
1311	132+14.59	-34.65'
1312	132+56.00	-34.69'
1313	132+56.00	-39.69'
1314	132+76.95	-39.71'
1315	132+92.69	37.28'
1316	131+95.00	37.37'
1317	131+95.00	35.37'
1318	131+60.00	35.41'
1319	131+32.86	45.00'
1320	131+33.00	88.05'
1321	131+28.00	88.07'
1322	130+68.00	87.96'
1323	130+63.00	87.97'
1324	130+62.88	49.06'
1325	130+50.55	35.52'
1326	130+05.00	35.56'
1327	130+05.00	40.56'
1328	129+40.60	40.62'
1329	129+40.58	35.62'
1500	132+77.06	-29.71'
1510	132+92.67	30.28'

UTILITY NUMBER	OWNER(S)	INTEREST REQUIRED
110	WIN TECHNOLOGY	RELEASE OF RIGHTS
111	WISCONSIN PUBLIC SERVICE CORP.	RELEASE OF RIGHTS
114	WISCONSIN PUBLIC SERVICE CORP.	RELEASE OF RIGHTS
115	CITY OF STEVENS POINT	RELEASE OF RIGHTS
116	WISCONSIN PUBLIC SERVICE CORPORATION, CHARTER COMMUNICATIONS, AMERITECH	RELEASE OF RIGHTS
117	SPECTRUM	RELEASE OF RIGHTS

- 110 WIN TECHNOLOGY
NO RECORD EASMENT
(FIBER OPTIC)
PARCEL 40
- 111 WISCONSIN PUBLIC SERVICE CORP.
EASEMENT DOC 749300
PARCEL 40
- 114 WISCONSIN PUBLIC SERVICE CORP.
NO RECORD EASMENT (ELEC)
PARCEL 46
- 115 CITY OF STEVENS POINT
NO RECORD EASMENT
(SIGNAL CONTROLLER, ELEC)
PARCELS 40,46,47,48
- 116 WISCONSIN PUBLIC SERVICE CORP.,
CHARTER COMMUNICATIONS,
AMERITECH
EASEMENT DOC 608348
PARCEL 47
- 117 SPECTRUM
NO RECORD EASMENT
(FIBER OPTIC)
PARCEL 40



4

4

REVISION DATE	DATE 6/26/2025	SCALE, FEET 0 20 40	HWY: BUSINESS 51 / DIVISION STREET	STATE R/W PROJECT NUMBER 60730575-21	PLAT SHEET 4.04
	GRID FACTOR N/A		COUNTY: PORTAGE	CONSTRUCTION PROJECT NUMBER	PS&E SHEET E