



Our intention is to have in-person meetings going forward. For the time being, we will hold the City Committee Meetings, Plan Commission, Council and most others at the Community Room at 933 Michigan Avenue. This in-person location will meet the legal requirement for our open meetings.

We will have a virtual option available, but the technology for the hybrid style meeting may not be reliable all of the time.

AGENDA

AGE-FRIENDLY COMMISSION

Members

- Lee Bartnik
- Pearlina Douglas
- Kate Giblin
- John Jury
- Marcia McDonald
- Michelle Miller
- Dominique Swangstu
- Kaitlyn Wall
- Don Wigington
- Mykeerah Zarazua

Date November 16, **Location:** Community Room
and 2023 933 Michigan Avenue, Stevens Point, WI
Time: 5:00 PM

OR

Zoom Teleconferencing

Meeting ID: 896 2665 6454

Passcode: 273527

By Computer:

<https://us02web.zoom.us/j/89626656454?pwd=YVJTeG1laW9MMMy80QTRmTF>

By Phone: +1-312-626-6799 (US Chicago)

Opening Section:

1. Roll Call

Discussion and Possible Action on the Following:

2. Introductions.
3. Discussion on the AARP's Network of Age-Friendly Communities and the Role of the Stevens Point Age-Friendly Commission.
4. Introduction - Community Needs Assessment.
5. Adjourn

PLEASE TAKE NOTICE that any person who has special needs while attending these meetings or needs agenda materials for these meetings should contact the City Clerk as soon as possible to ensure that a reasonable accommodation can be made. The City Clerk can be reached by telephone at (715) 346-1569 or by mail at 1515 Strongs Avenue, Stevens Point, WI 54481.

Maps further defining the above area(s) may be obtained from the City of Stevens Point Department of Community Development, 1515 Strongs Avenue, Stevens Point, WI 54481, or by calling (715) 346-1567, during normal business hours.

PLEASE TAKE FURTHER NOTICE that a quorum of the Common Council may be in attendance at this meeting.



MEMORANDUM

To: Age-Friendly Commission

From: Adam Kuhn, AICP
Associate Planner / Zoning Administrator

Date: November 16, 2023

RE: Discussion on the Network of Age-Friendly Communities

Background: Last year, the City of Stevens Point formally became a member of AARP's Network of Age-Friendly Communities. Established in 2012, the AARP Network of Age-Friendly Communities is a membership organization of like-minded government entities that strive to implement policies and actions that make their communities more livable for people of all ages. These actions can take root in a variety of areas, such as housing, transportation, land use, economic development and public facilities.

As a member of the Network of Age-Friendly Communities, Stevens Point will commit towards adopting an action plan that makes the places where we live more livable for people of all ages and abilities. In coordination with this Commission, the final report will address the livability of Stevens Point based on the following criteria:

- Housing;
- Outdoor spaces and buildings;
- Transportation;
- Communication and information;
- Civic participation and employment;
- Respect and social inclusion;
- Health services and community supports; and
- Social participation.

To give a flavor as to the scope and level of detail for this action plan, the following are examples of adopted action plans from other communities in Wisconsin:

www.stevenspoint.com

Open Records Rider: The City of Stevens Point is subject to Wisconsin Statutes relating to public records. Communication, such as this document, sent or received by City employees are subject to these laws. Unless otherwise exempted from the public records law, senders and receivers of City communication should presume that the communications are subject to release upon request, and to state record retention requirements.

- [Greendale](#)
- [Madison](#)
- [Oshkosh](#)
- [Sheboygan](#)

During this first meeting of the City's Age-Friendly Commission, Darrin Wasniewski, Associate State Director of Community Outreach for AARP-Wisconsin and I will provide an overview of AARP's Network of Age-Friendly Communities and discuss the role of this Commission in producing and implementing the aforementioned action plan.

Attached are some supplemental information that will be shared during the meeting. If you have any questions prior to the meeting, please do not hesitate to contact me.



AARP Network of Age-Friendly States and Communities

An age-friendly community is livable for people of *all* ages

America's Population Is Rapidly Aging

According to the U.S. Census Bureau, by 2034 the nation will have more people age 65 or older than under 18. By 2060, nearly 1 in 4 people in the United States will be at least 65 years old.

This demographic shift presents an opportunity for communities that are prepared. Well-designed, age-friendly communities foster economic growth and make for happier, healthier residents of all ages.

The **AARP Network of Age-Friendly States and Communities** supports the work of local, regional and state governments as they prepare for the nation's changing demographics. Established in 2012, the network includes towns, cities, counties and states that have made a commitment to being more livable for people of all ages, and especially older adults.

The program's framework equips local leaders and residents with resources for assessing the needs of older adults related to housing and transportation options, access to key services, and opportunities to participate in community activities. Once identified, those needs can be incorporated into an action plan.



Age-Friendly Communities
Are Livable for
People of All Ages
aarp.org/livable

Membership in the network:

- Serves as an organizing structure for making community improvements
- Fosters partnerships among community groups and local stakeholders
- Provides resources for identifying and assessing community needs
- Enables community improvements that benefit people of all ages

Membership provides local leaders with:

- Access to expert-led webinars and technical assistance from livability professionals
- Connections to a national network of more than 700 enrolled communities
- A private group forum for discussions, asking questions and finding answers
- Support, guidance and best-practice resources from AARP about creating an action plan and documenting progress

Membership in the AARP Network of Age-Friendly States and Communities is *free!*

Membership matters:

- 68% of communities successfully advanced policy changes
- 86% of communities overcame barriers
- More than 100 million people in the United States live in a community that is committed to being age-friendly.

DEMOGRAPHIC DATA: "Demographic Turning Points for the United States: Population Projections for 2020 to 2060," *Current Population Reports*, P25-1144, U.S. Census Bureau, Washington, D.C., 2020

AARP NETWORK OF AGE-FRIENDLY STATES AND COMMUNITIES DATA: 2022 Member List and Survey

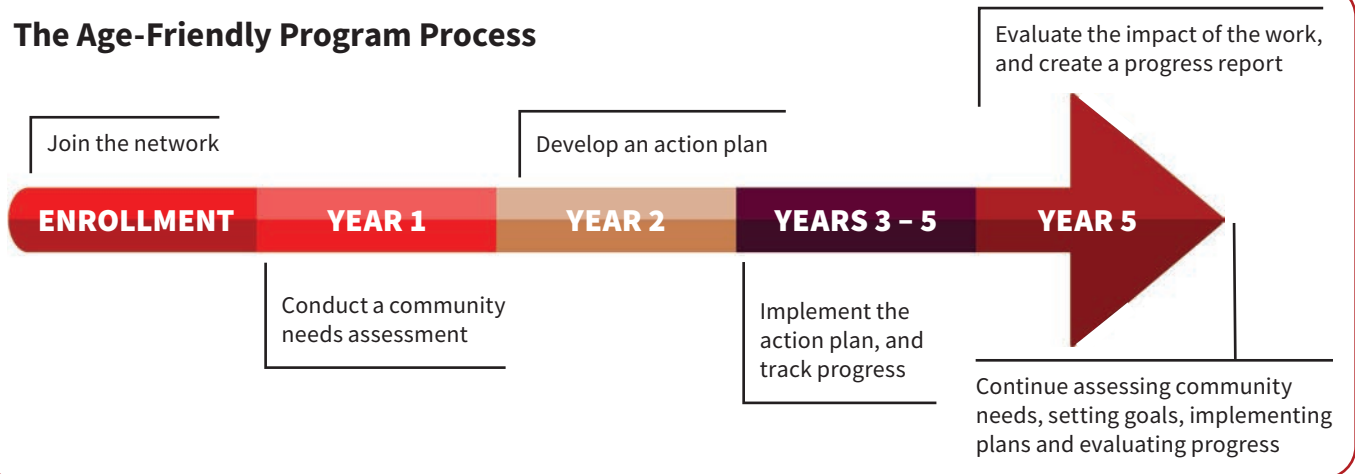


Enrolling in the Network

Communities enroll individually or as part of a region. A governor can choose to enroll an entire state. All towns, villages, townships, boroughs, cities, counties and states seeking to enroll in the AARP Network of Age-Friendly States and Communities are required to submit a membership application. The community must also provide a letter of commitment signed by the jurisdiction's highest elected official (e.g., a governor, mayor, county executive) or a legislative body can pass and provide a resolution in support of membership.

Learn more and find the membership application via [AARP.org/AgeFriendly](https://www.aarp.org/AgeFriendly).

The Age-Friendly Program Process

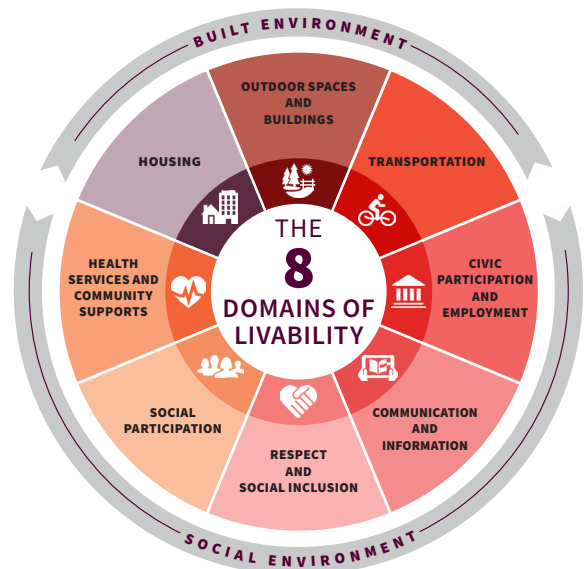


The Program Steps

Members of the **AARP Network of Age-Friendly States and Communities** commit to an assessment process and cycle of continuous improvement, the steps of which typically require the member community to:

1. Establish a way to include older residents in all stages of the age-friendly process
2. Conduct a community needs assessment (*AARP provides survey examples and access to an online tool*)
3. Develop an action and evaluation plan based on the assessment results and submit to AARP for review
4. Implement the plan and work toward its goals
5. Assess the impact of implementing the plan and submit progress reports
6. Share solutions, successes and best practices across the age-friendly network
7. Repeat!

The **8 Domains of Livability** is the framework used by states and communities enrolled in the network to organize and prioritize their work. The availability and quality of these community features impact the well-being of older adults and people of all ages.



LEARN MORE, GET IN TOUCH

- **Website:** [AARP.org/AgeFriendly](https://www.aarp.org/AgeFriendly) or [AARP.org/Livable](https://www.aarp.org/Livable)
- **Twitter:** @AARPLivable
- **Free Newsletter:** [AARP.org/LivableSubscribe](https://www.aarp.org/LivableSubscribe)
- **Email:** AARPAge-FriendlyNetwork@AARP.org
- **Locate Your AARP State Office:** [AARP.org/States](https://www.aarp.org/States) or call 1-888-687-2277
- **Facebook:** /AARPLivableCommunities

OR SCAN THIS CODE



D19860

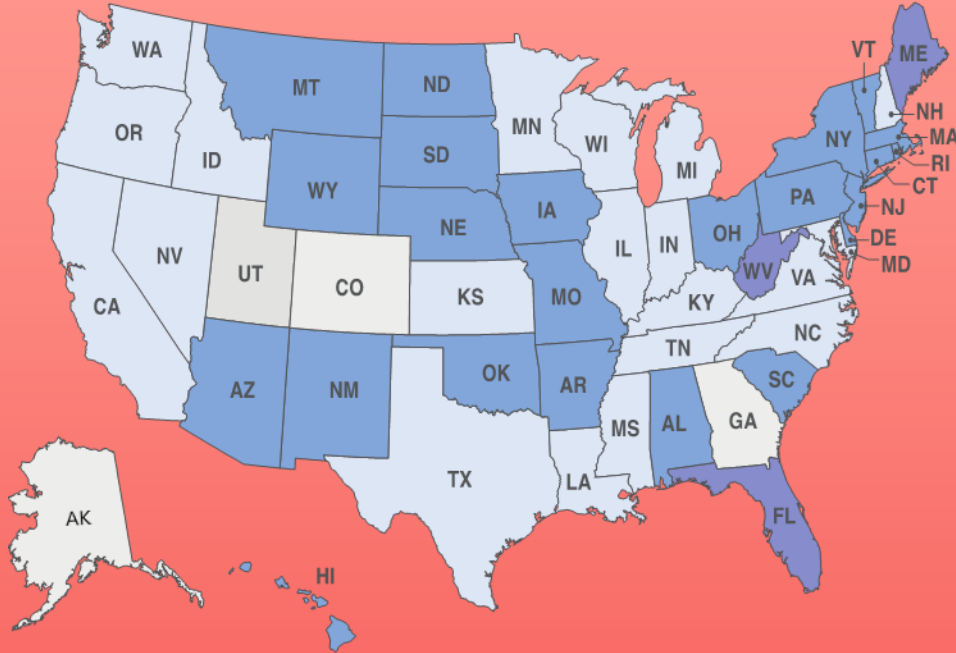


**Age-Friendly Communities
Are Livable for
People of All Ages**
aarp.org/livable

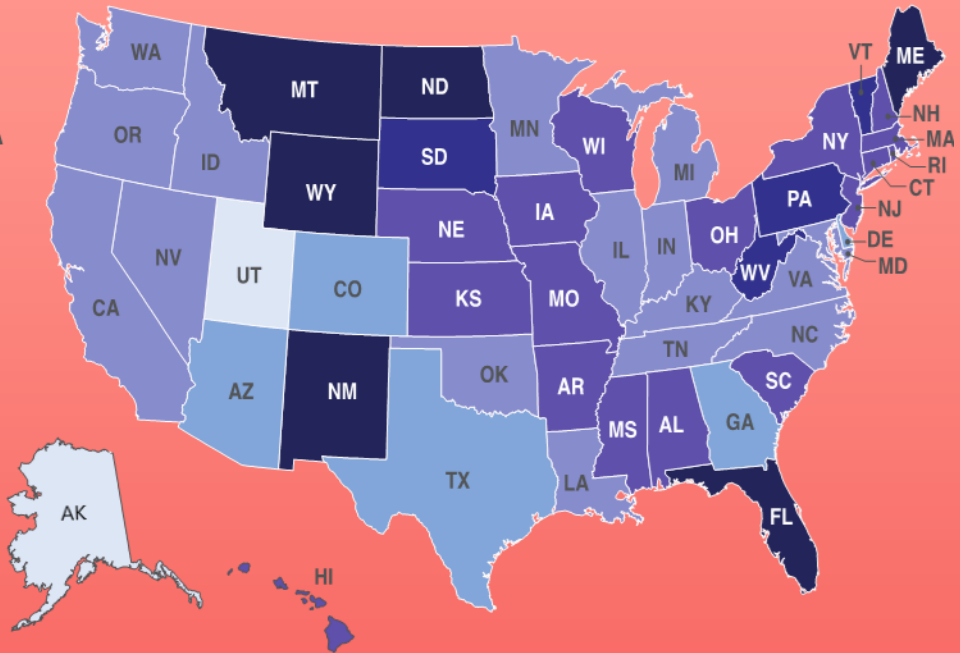
Is Your Community Age-Friendly?

America is aging

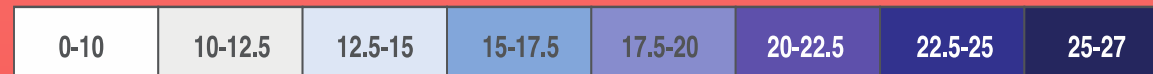
2015



2030



PERCENT OF POPULATION AGE 65+



Source: US Census

People want to stay in their homes and communities...

Two-thirds (67%) of all adults — and 79% of those 50-plus — want to stay in their current communities. Adults primarily value communities that foster good health, promote street safety, and provide good opportunities for community engagement and social interaction.

High numbers of Americans want “forever homes” — to stay in their current homes as they age. The percentage is even higher for adults age 50-plus, with more than three-quarters wanting to remain in their home as they age. But more aging-in-place modifications and technology are needed to make that possible.

Source: AARP Home and Community preferences Survey 11/21



Numbers of Older Adult Head of Households and Renters Soaring

Households headed by people age 65-plus are expected to grow from 34 million to 48 million in the next 20 years.

The number of renters among adults 65-plus is expected to grow from 7.4 million in 2020 to 12.9 million by 2040, with a particularly significant increase among Black renters age 65-plus (projected to double from 1.3 million to 2.6 million).



Caregivers

One in five Americans is a family caregiver, and caregivers often have unique needs for their homes:

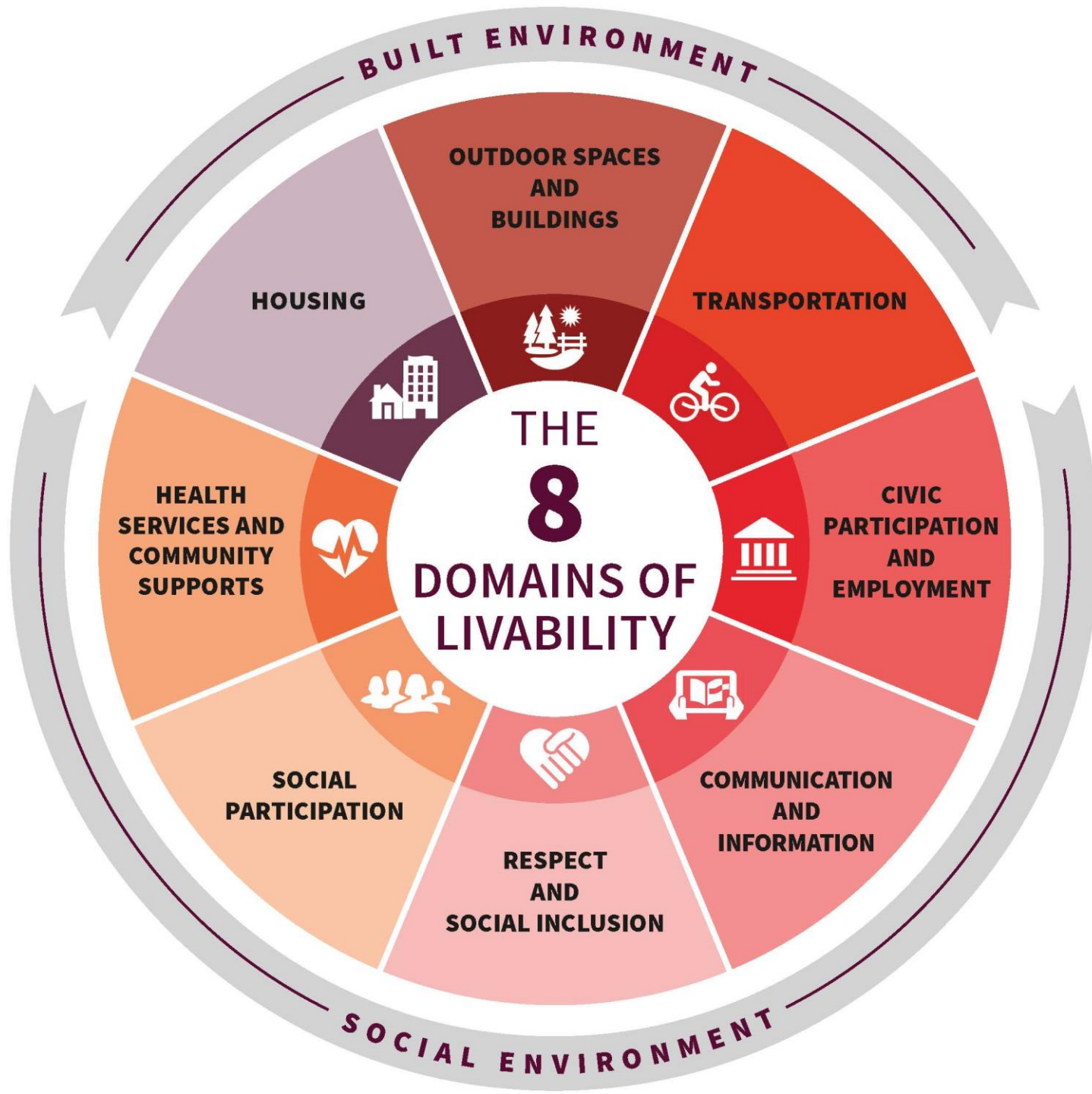
40% care for someone living in their home.

38% care for someone living on their own.

Of those, 49% are concerned about the ability of the person they are caring for to continue to live on their own.



What is the first thing that comes to mind when you hear the term, “Age-Friendly”?



The 8 Domains of Livability

is the framework used by states and communities enrolled in the network to organize and prioritize their work to become more livable for both older residents and people of all ages.

The availability and quality of these community features impact the well-being of older adults.



Outdoor Spaces & Buildings

People need public places to gather — indoors and out. Green spaces, seating and accessible buildings (elevators, zero-step entrances, staircases with railings) can be used and enjoyed by people of all ages

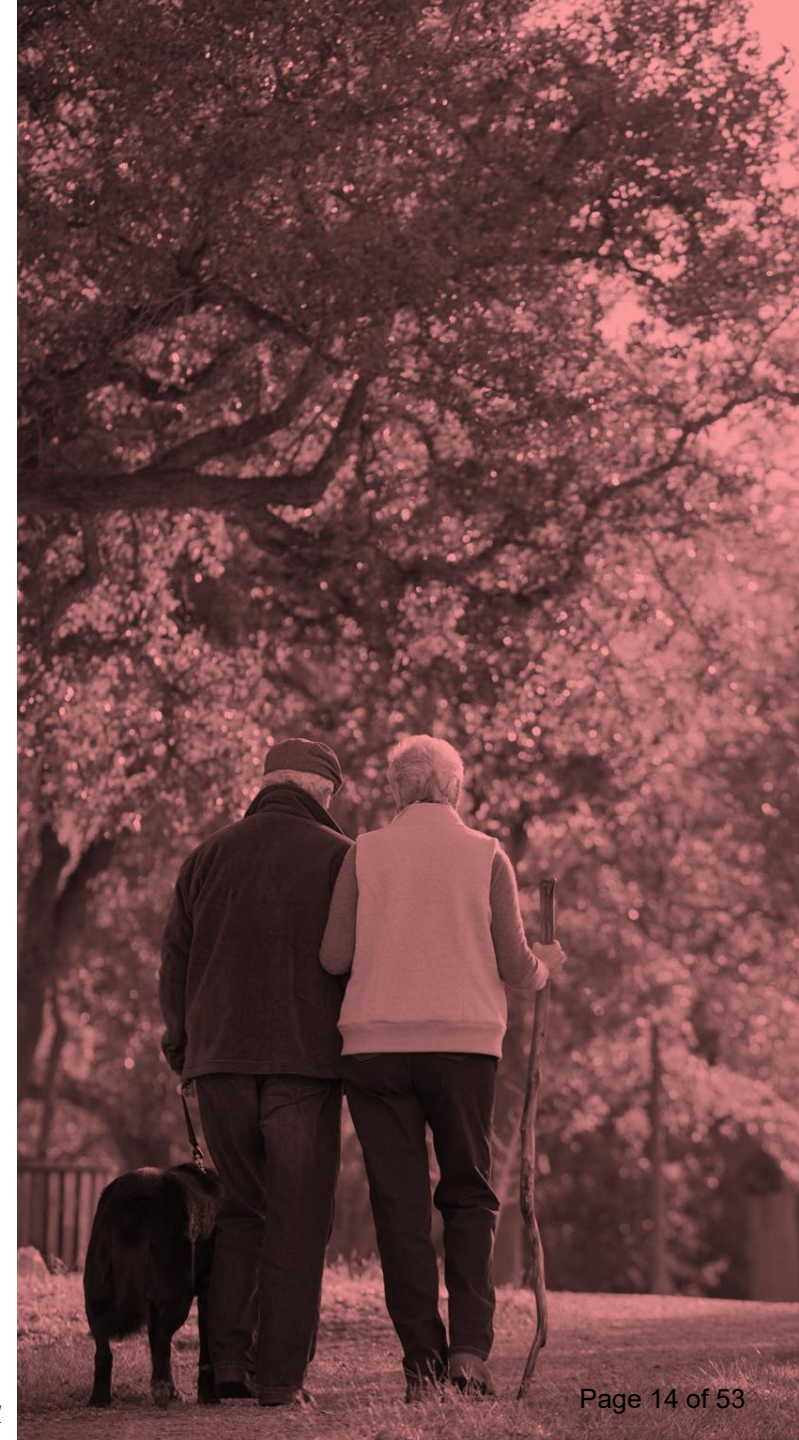
Nearly three-quarters of adults (73%) say it is important to have safe, well-lit parks that give residents places to gather and interact with friends.

Resources:

[Creating Parks and Public Spaces](#)

[The Pop-up Placemaking Toolkit](#)

[The Walk Audit Toolkit](#)



Housing

We spend more time in our homes than anywhere else, so housing costs, choices, and accessibility are critical. Great communities provide housing opportunities for people of all ages, incomes, and abilities.

More than three-quarters of adults ages 50 and older want to stay in their homes (77%) and communities (79%) as they age.

Resources:

[Making Room for 'Making Room'](#)
[The ABCs of ADUs](#)
[AARP HomeFit Guide](#)





Transportation

Driving shouldn't be the only way to get around. Pedestrians need sidewalks and safe, crossable streets. Moving easily and safely from one place to another vastly improves quality of life.

Well-maintained, accessible and safe streets are reported as being among the most important community features for transportation.

Resources:

[Future of Transportation](#)

[Roadmap to Livability: Transportation Workbook](#)

[AARP Public Policy Institute Transportation Resources](#)





Social Participation

Participating in social activities makes people feel as if they matter to a community, which provides a sense of meaning and belonging. Social activities can help relieve the angst of perceived social isolation.

Top predictors of loneliness: size and diversity of an individual's social network and being physically isolated. Other contributing factors include age, depression, urbanicity, anxiety and overall health

Resources:

[Engaging the Community Creates Community](#)

[Age-Friendly and Accessible Event Guide](#) (Cleveland, OH)

[Community Guide to Accessible Events and Meetings](#) (Seattle, WA)





Respect & Social Inclusion

Everyone wants to feel valued. Socially inclusive gatherings and activities are a great way for people to learn from one another, honor what each has to offer and, at the same time, feel good about themselves.

A strong majority (71%) of adults ages 50+ believe it's important for their community to treat all residents equally regardless of race, gender, age, ethnic background, sexual orientation, or other differences.

Resources:
[Disrupt Aging](#)
[Equity By Design](#)





Civic Engagement & Employment

Why does work need to be an all or nothing experience? An age-friendly community encourages older people to be actively engaged in community life and has opportunities for residents to work for pay or volunteer their skills.

Holding a perception that one can make a difference on problems that exist in their community is a top predictor of 50+ civic engagement.

Resources:

[Create the Good](#)
[AARP Employer Pledge Program](#)





Communication & Information

Age-friendly communities recognize that information needs to be shared through a variety of methods since not everyone is tech-savvy, and not everyone has a smartphone or home-based access to the internet.

76% of adults age 50-plus place high importance on having access to reliable and affordable in-home high-speed Internet.

Resources:

[Roadmap to Livability: Community Listening Toolkit](#)
[Exploring Digital Equity Fact Sheet Series](#)
[AARP Free E-Newsletters](#)





Health & Community Svcs.

Community support is strongly connected to good health and well-being throughout life, alongside accessible and affordable health care services, which are vital for maintaining health and independence.

U.S. adults age 45+ think many healthcare issues are important: staying mentally sharp (96%), staying physically healthy (92%), having adequate health insurance coverage (91%)

Resources:

[RTL: Health Services and Community Supports Workbook](#)
[AARP Prepare to Care Guide](#)





Disaster Preparedness

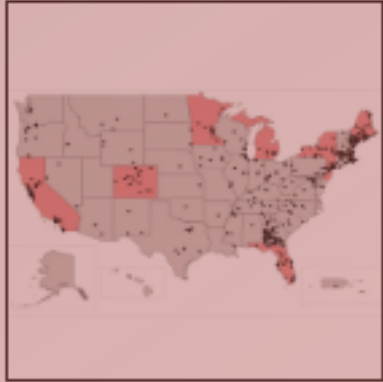
Community planning plays a vital role in reducing the long-term risks to life and property from natural hazards such as hurricanes, earthquakes, wildfires, and floods.

Adults aged 65 and older are a growing demographic who are often disproportionately impacted by severe weather.

Resources:

[AARP Disaster Resilience Toolkit](#)
[Guide to Expanding Mitigation](#)
[Wildfire Home Retrofit Guide](#)





700+ Communities — and Counting!

Nine states, one territory, and hundreds of towns, cities and counties are enrolled in the AARP Network of Age-Friendly States and Communities. Local leaders who have joined the network are working to make their communities great places for people of all ages.

[CHECK OUT THE MEMBER LIST](#)



Mapping Age-Friendly Efforts

Use the interactive AARP Livable Communities Map to discover where, and how, AARP is helping communities become more livable and age-friendly so people of all ages can thrive — and make where they live and want to remain a lifelong home.

[SEARCH THE MAP](#)

Livability News & Notes



As Gen X and Boomers Age, They Confront Living Alone — More older Americans are living by themselves than ever before. That shift impacts housing, health care and personal finances, especially for women. *Source: The New York Times* ▶

AARP LIVABLE COMMUNITIES Resources



Tools to help local leaders



Livable Communities Landing Page:

[aarp.org/livable](https://www.aarp.org/livable)



Livable Communities Newsletter:

[aarp.org/livable-newsletter](https://www.aarp.org/livable-newsletter)



Livable Communities Map:

livablemap.aarp.org



Community Challenge Grant Program:

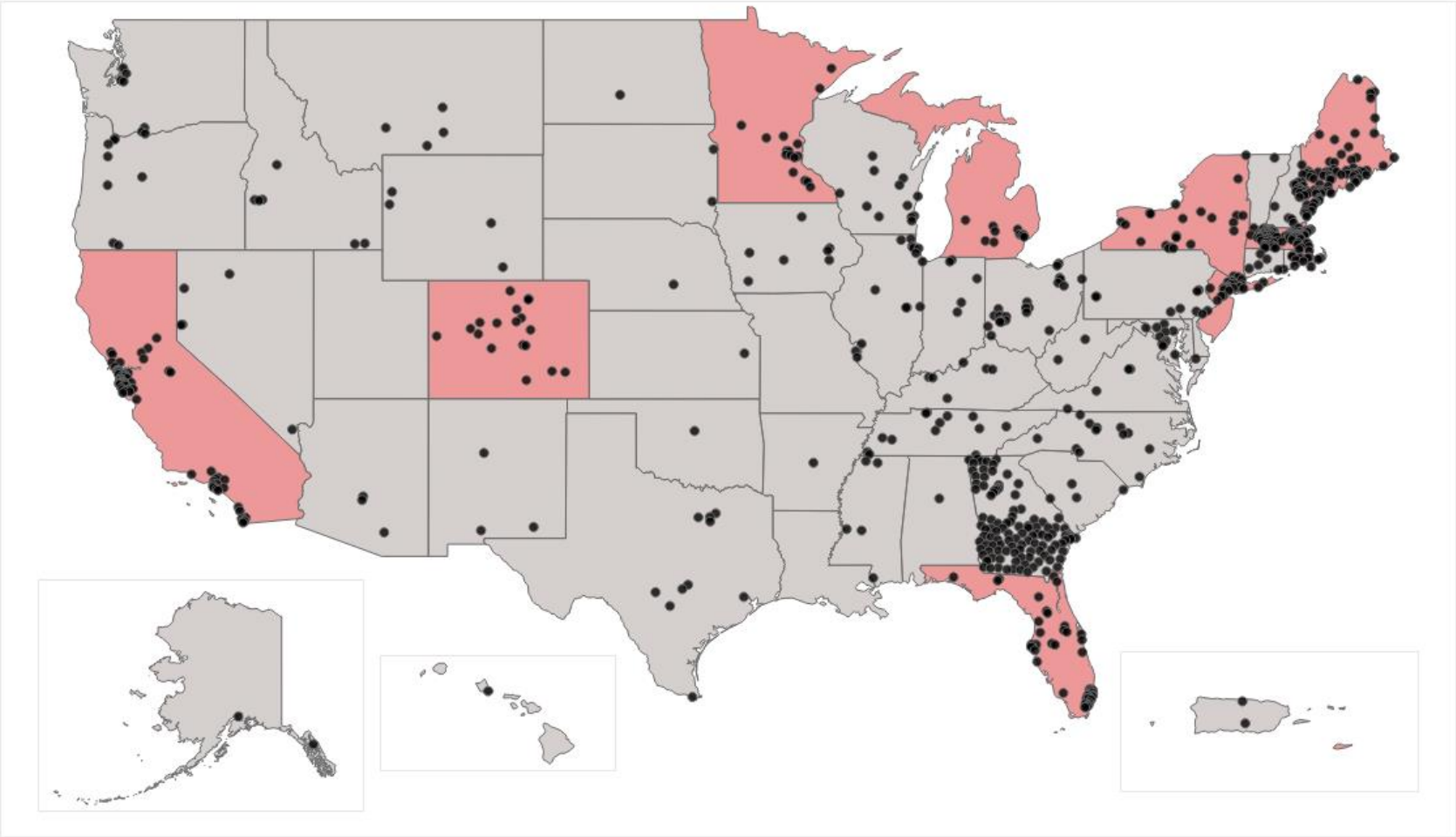
[aarp.org/communitychallenge](https://www.aarp.org/communitychallenge)



20+ Free Publications:

[aarp.org/livablelibrary](https://www.aarp.org/livablelibrary)

AARP Network of Age-Friendly States and Communities (NAFSC)

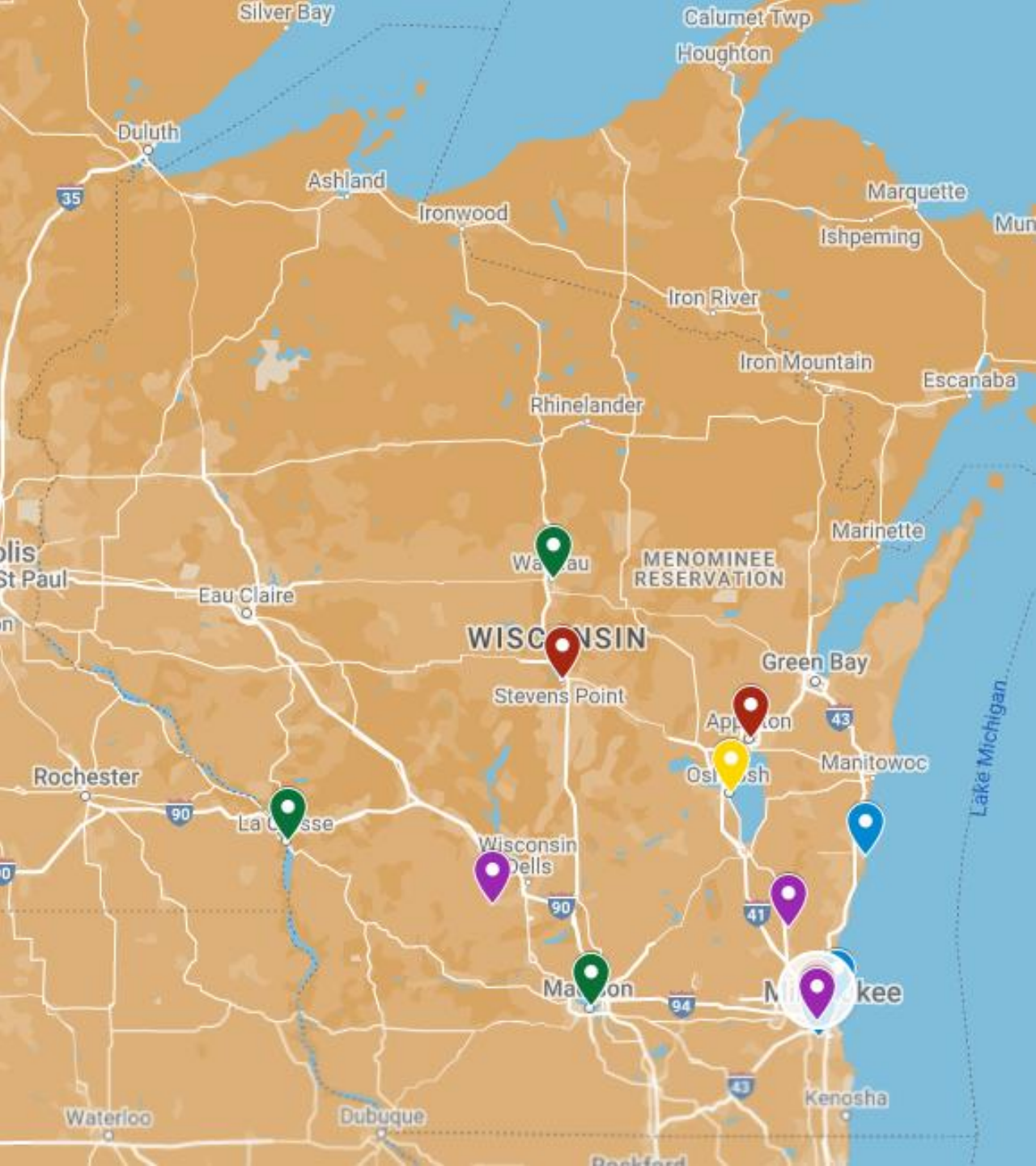


There are currently 771 communities, 10 states and 1 territory enrolled (updated 7.11.23)

AARP Network of Age-Friendly States and Communities (NAFSC)

Current WI Network Members:

- Appleton, Greendale, La Crosse, Madison, Oshkosh, Reedsburg, Sheboygan, Shorewood, Stevens Point, Wausau, Wauwatosa, West Allis, & West Bend



An Age-Friendly Community is...



...one where a community's elected leadership has made a commitment to actively work with residents and local advocates to make their town, city, or county an age-friendly place to live through enrollment in the AARP Network of Age-Friendly States and Communities!

AARP Livable Communities



Membership Application

Join the AARP Network of Age-Friendly States and Communities

AARP Livable Communities

When a town, city, county or state joins the AARP Network of Age-Friendly States and Communities, it is joining a global and age-friendly community.

The AARP network is an organizational affiliate of the World Health Organization Global Network of Age-Friendly Cities and Communities. If you are a community wishing to join the global network instead of or in addition to the AARP program can find application information on the WHO website.

To enroll your community in the AARP network, please complete and submit the application below.

Note: Since content added to this form cannot be saved, we advise that you review and download a PDF of the questions in advance to have the information you'll need, and draft the narrative responses offline for later pasting into the applicable fields. If this form doesn't work for you, please email the materials to AARPAge-FriendlyNetwork@aarp.org.

Section 1: Community Details

Application Submission Date

01/24/2023

State

Select a State

Community Name

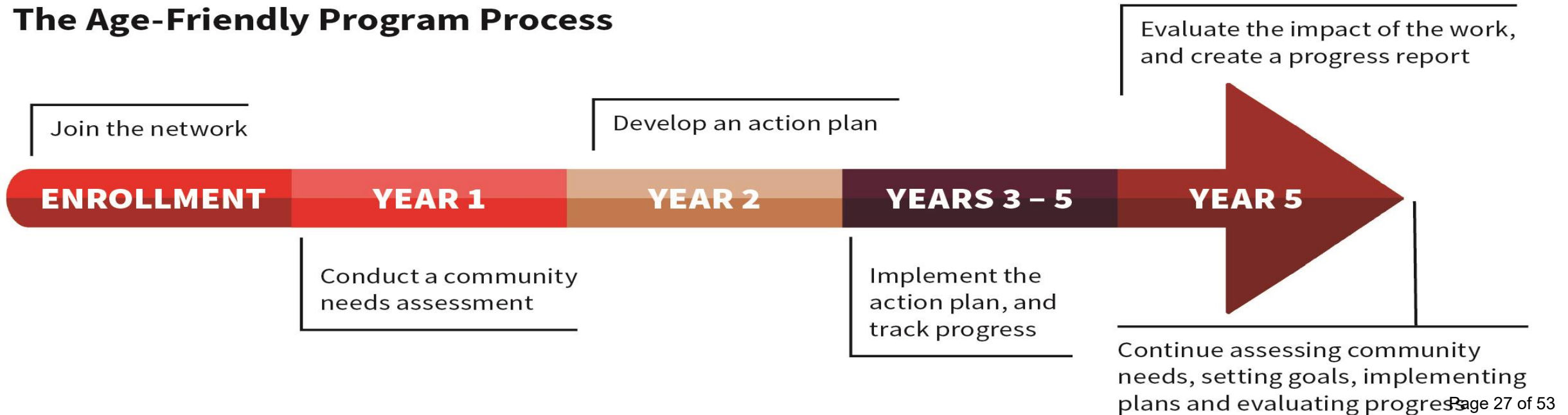
Total Population

The Age-Friendly Program Process

All communities seeking to enroll in the AARP age-friendly network are required to submit a membership application and commit to a 5-year process of improvement which includes:

- ✓ conducting a community needs assessment
- ✓ developing an action and evaluation plan
- ✓ implementing and assessing the plan's impact
- ✓ the voice of older residents in all stages of planning and implementation

The Age-Friendly Program Process



Benefits of Enrolling

Membership in the network:

- ✓ Serves as an organizing structure for making community improvements
- ✓ Fosters partnerships among community groups and local stakeholders
- ✓ Enables changes that benefit people of all ages
- ✓ Provides resources for identifying and assessing community needs

Membership provides a community with:

- ✓ Access to technical assistance and expert-led webinars
- ✓ Access to a national network of over 700 communities enrolled in the network
- ✓ Support and best practice materials from AARP
- ✓ Help for local leaders to identify and understand community needs

Impact of Joining

68%

Advocated for Policy
Change

Age-friendly initiatives are catalyzing local policy change. Nearly 2:3 age-friendly communities reported that they had successfully advocated for changes in municipal or organizational policy.

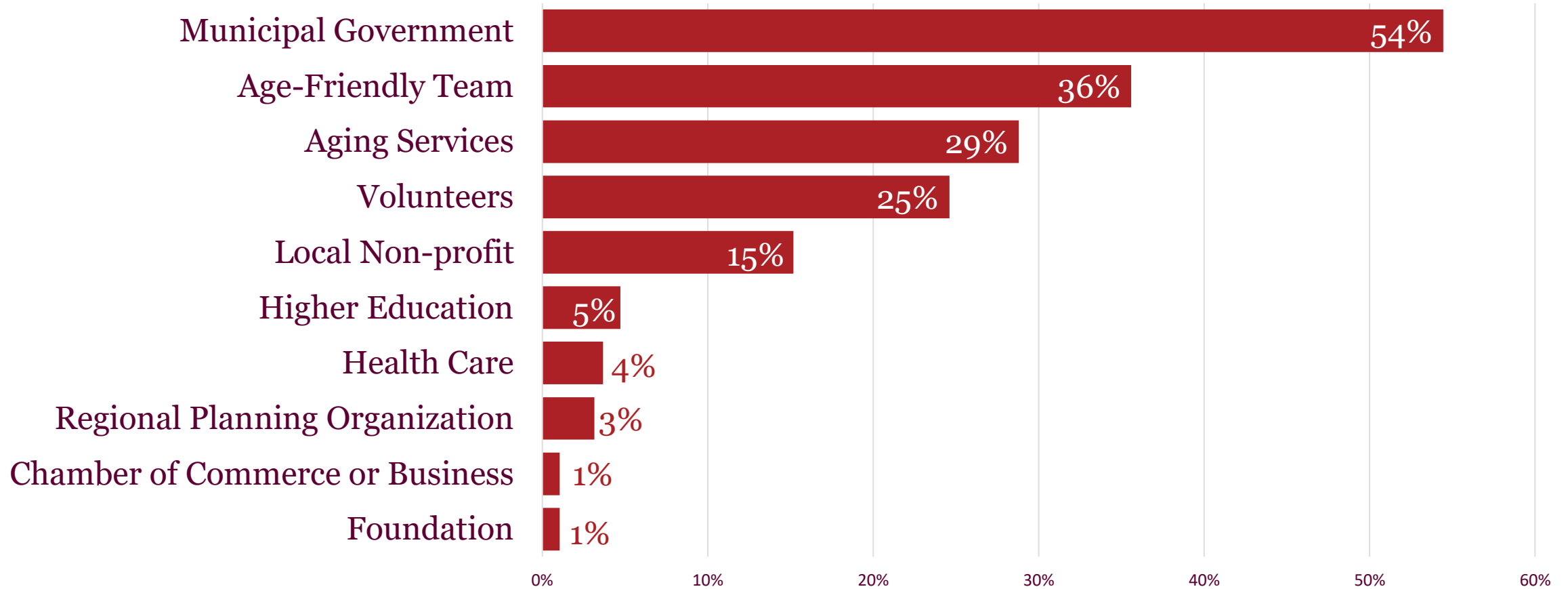
86%

Overcame Barriers to Age-
Friendly Change

The NAFSC 5-year program cycle and framework is setting communities up for success. By applying the age-friendly programmatic framework, respondents reported overcoming barriers to improve the community for older residents.



Lead Organization Coordinating Age-Friendly



How are communities preparing for the long-term sustainability of age-friendly initiatives?

- ✓ Integrated Into Municipal Plans (56%)
- ✓ Recruiting Partners from Multiple Sectors (55%)
- ✓ Staffing Commitment from Municipality (50%)
- ✓ Included in Our Action Plan (31%)
- ✓ Staffing Commitment from Organization (26%)
- ✓ Relationships with Diverse Funders (25%)
- ✓ Leadership Succession Plan (13%)
- ✓ Not Yet (21%)

What Does this Look Like in Wisconsin?



What Does this Look Like in Wisconsin?



What Does this Look Like in Wisconsin?



20 February 2023

222 W. Washington Avenue, Suite 600 | Madison, WI 53701
608-286-6300 | aarp.org/wi | wistate@aarp.org
twitter: @aarpwi | [facebook.com/AARP Wisconsin](https://facebook.com/AARP-Wisconsin)

Comments of AARP Wisconsin Regarding Appleton's Proposed College Avenue Reconfiguration

On behalf of AARP Wisconsin's almost 16,000 members in Appleton, we write to submit comments regarding the City of Appleton's proposed College Avenue Reconfiguration, also commonly known as a "road diet". AARP is a nonpartisan, nonprofit, nationwide organization that helps empower people to choose how they live as they age, strengthens communities, and fights for the issues that matter most to families, including issues that support the creation and preservation of livable communities. Appleton has been a member of AARP's Network of Age-Friendly States and Communities since May 2022 and it is this relationship that brings me here today.

Environmental psychology tells us that most drivers regulate their driving speed on what feels comfortable based on street design. This means that in wider, more open spaces, people tend to drive faster, no matter posted speed limits. These faster travel speeds have a negative effect for people traveling by foot or mobility device. Not only do people feel less safe around cars traveling at higher speeds, research shows they are less safe. Here are some statistics to help frame the importance of designing roads for all people in Appleton:

- Wisconsin Department of Transportation estimates that at least 40% of the city's residents are non-drivers.
- A typical person outlives his or her ability to drive by 8-10 years.
- People over the age of 65 are disproportionately represented as victims of pedestrian-auto crashes.
- Optimum speeds in a commercial district where high pedestrian and biking activity is desired is 25 mph. At 35 mph there is an 85% chance that a person walking will be killed if hit by a motor vehicle.

We would like to highlight some relevant information contained within AARP's publication Road Diets: A Livability Fact Sheet which, we noted, is linked within the supporting material on the city's project information page. People often worry that road diets will divert traffic, but research does not support this. People in cars tend to use the most direct route to their destination and timing traffic signals correctly can actually decrease the time it takes to get through an area even with less travel lanes and slower speeds.



17 January 2023

222 W. Washington Avenue, Suite 600 | Madison, WI 53701
608-286-6300 | aarp.org/wi | wistate@aarp.org
twitter: @aarpwi | [facebook.com/AARP Wisconsin](https://facebook.com/AARP-Wisconsin)

Comments of AARP Wisconsin Regarding Madison's Draft TOD Overlay Zoning

On behalf of AARP Wisconsin's almost 30,000 members in Madison, we write to submit comments regarding the City of Madison's DPCED Planning's proposed TOD Overlay Zoning. AARP is a nonpartisan, nonprofit, nationwide organization that helps empower people to choose how they live as they age, strengthens communities, and fights for the issues that matter most to families, including issues that support the creation and preservation of livable communities.

A livable community has affordable and appropriate housing, supportive features and services, and adequate mobility options for people, regardless of age or ability. While for many communities the general shortage of affordable housing is a challenge, a community can increase its livability by implementing measures to facilitate transit-oriented developments (TODs) that intentionally incorporate affordable housing. Without this intention, the desirability of TODs can exacerbate the challenges of housing affordability due to increased land and property values.

AARP applauds the overall direction of the DPCED's proposed plan along Madison's soon-to-be implemented Bus Rapid Transit corridors and along some High-Frequency Local Bus Routes. We especially appreciate the broad scope of the DPCED's efforts to support and encourage TODs, as well as engaging in a development process that has included substantial public input and technical analysis. Wisconsin Department of Transportation estimates that over 30% of Madison residents are non-drivers. This number is sure to grow in coming years with our aging population as research shows a typical person outlives their ability to drive by 8-10 years. We believe proactive measures, such as TOD, work to ensure every person's right to mobility.

As Madison's policymakers seek to extend the benefits of TODs, we urge you to ensure that those benefits are available to people of low and moderate incomes and to those with different mobility challenges and needs. TOD policies must ensure that these developments provide both housing and transportation options and a range of features that allow people to retain independence as they age.

For these reasons, AARP offers the following additional recommendations:

- In general:

- To foster the ability of people to retain their independence, residential housing in TOD policies should encourage incorporation of visibility and universal design features, like wide doorways and hallways, accessible bathrooms, and accessible kitchens to name a few. Although the term "visibility" refers to

How Age-Friendly do you think your community is?

Take a self-assessment. Rank your community on a scale of 1-10 on each of the domains of livability:

Domain	Score
Housing	_____
Outdoor Spaces and Buildings	_____
Transportation	_____
Civic Participation/Employment Opportunities	_____
Communication and Information	_____
Respect and Social Inclusion	_____
Social Participation	_____
Health Services and Community Supports	_____

Advice for communities

Do it! Plenty of age-friendly work happens and has been happening for years, but involvement in the NAFSC embeds you in a larger learning network and adds legitimacy and urgency to the cause.

Legitimacy. Being part of the World-Wide movement gives the local AF more clout.

Collaboration. The collaborations are so refreshing! You will benefit from closer collaborations with AARP, between and across government departments, and with the community and business partners.

Municipal Engagement. Make sure elected officials know what you are doing. They are some of the most effective age-friendly champions and the easiest to engage (when) you can show that you are a doing committee, not a sitting committee.

Funding. DEI is a growing foundation for many grants and funding programs and Age-Friendly hits those objectives. It is a positive, proactive, feel-good policy initiative.

Darrin Wasniewski
Director of Community Outreach
608-286-6303
dwasniewski@aarp.org



MEMORANDUM

To: Age-Friendly Commission

From: Adam Kuhn, AICP
Associate Planner / Zoning Administrator

Date: November 16, 2023

RE: Community Needs Assessment – Action Plan

Background: As this Commission will work towards the creation of an action plan that addresses 'livability' in Stevens Point among key metrics, an early action during the planning process will be to conduct a community needs assessment to better understand the wants and needs amongst our citizens.

AARP provides an age-friendly community survey that can be used by this Commission to better gauge what residents want relative to each domain of livability. Included in this agenda packet is the survey in its entirety. While a greater discussion will occur at our next meeting as to what should be added, removed or modified from this community survey, please review this document to determine the efficacy of this survey for creating an action plan. Please note that the primary intent of this survey is intended to make residents think about where they live, how they live currently and how they want to live in an ideal scenario.

www.stevenspoint.com

Open Records Rider: The City of Stevens Point is subject to Wisconsin Statutes relating to public records. Communication, such as this document, sent or received by City employees are subject to these laws. Unless otherwise exempted from the public records law, senders and receivers of City communication should presume that the communications are subject to release upon request, and to state record retention requirements.

Age-Friendly Community Survey

We would like to find out about your community and what you'll need as you get older to make your community a great place to live. Your views are important, and we would greatly appreciate your participation in this survey. This survey is being conducted for research purposes only, and we promise that your name and individual opinions will be kept confidential. This survey will take about 20 minutes to complete.

YOUR HOME AND COMMUNITY

Q1. Are you a resident of _____?
[INSERT STATE, CITY, COUNTY, TOWN, OTHER AREA]?

- ₁ Yes
- ₂ No
- ₀ Not sure

Q1a. What is the name of your community? _____

NOTE: For some people, this will mean the town or village in which they live, or it could be their neighborhood, their subdivision or housing development.

Q2. How long have you lived in your community?

- ₆ Less than 5 years
- ₅ 5 years but less than 15 years
- ₄ 15 years but less than 25 years
- ₃ 25 years but less than 35 years
- ₂ 35 years but less than 45 years
- ₁ 45 years or more

Q3. How long have you lived in your current residence?

- ₆ Less than 5 years
- ₅ 5 years but less than 15 years
- ₄ 15 years but less than 25 years
- ₃ 25 years but less than 35 years
- ₂ 35 years but less than 45 years
- ₁ 45 years or more

Q4. How would you rate your current community as a place for people to live as they age?

- ₅ Excellent
- ₄ Very good
- ₃ Good
- ₂ Fair
- ₁ Poor

Q5. Thinking about your future years, are you more likely to move to a different community, move to a different residence within your current community, or stay in your current residence and never move? [Check only one.]

- ₁ Move to a different community
- ₂ Move into a different residence within your current community
- ₃ Stay in your current residence and never move

Q6. Some people find that they need or want to move out of their home as they get older. If you were to consider moving out of your current residence, would the following be a major factor, a minor factor, or not a factor at all in your decision to move?

	MAJOR FACTOR	MINOR FACTOR	NOT A FACTOR	NOT SURE
a. Wanting a smaller size home	<input type="checkbox"/> ₃	<input type="checkbox"/> ₂	<input type="checkbox"/> ₁	<input type="checkbox"/> ₀
b. Wanting a larger size home	<input type="checkbox"/> ₃	<input type="checkbox"/> ₂	<input type="checkbox"/> ₁	<input type="checkbox"/> ₀
c. The cost of maintaining your current home	<input type="checkbox"/> ₃	<input type="checkbox"/> ₂	<input type="checkbox"/> ₁	<input type="checkbox"/> ₀
d. Wanting a home that will help you live independently as you age, for example a home without stairs	<input type="checkbox"/> ₃	<input type="checkbox"/> ₂	<input type="checkbox"/> ₁	<input type="checkbox"/> ₀

Q7. Some people find that they need or want to move out of their community as they get older. If you were to consider moving out of your current community, would the following be a major factor, a minor factor, or not a factor at all in your decision to move?

	MAJOR FACTOR	MINOR FACTOR	NOT A FACTOR	NOT SURE
a. Your personal safety or security concerns	<input type="checkbox"/> ₃	<input type="checkbox"/> ₂	<input type="checkbox"/> ₁	<input type="checkbox"/> ₀
b. Wanting to move to an area that has better health care facilities	<input type="checkbox"/> ₃	<input type="checkbox"/> ₂	<input type="checkbox"/> ₁	<input type="checkbox"/> ₀
c. Wanting to be closer to family	<input type="checkbox"/> ₃	<input type="checkbox"/> ₂	<input type="checkbox"/> ₁	<input type="checkbox"/> ₀
d. Needing more access to public transportation	<input type="checkbox"/> ₃	<input type="checkbox"/> ₂	<input type="checkbox"/> ₁	<input type="checkbox"/> ₀
e. Wanting to live in a different climate	<input type="checkbox"/> ₃	<input type="checkbox"/> ₂	<input type="checkbox"/> ₁	<input type="checkbox"/> ₀

Continued →

- f. Wanting to live in an area that has a lower cost of living ₃ ₂ ₁ ₀
- g. Wanting to live in an area with better opportunities ₃ ₂ ₁ ₀
for social interaction

Q8. How important is it for you to remain in your current community for as long as possible?

- ₅ Extremely important
- ₄ Very important
- ₃ Somewhat important
- ₂ Not very important
- ₁ Not at all important

Q9. Which of the following types of homes best describes where you currently live? [Check only one.]

- ₁ Single family house
- ₂ Two family house that has two separate living units
- ₃ Townhouse or row house
- ₄ Apartment
- ₅ Condominium or coop
- ₆ Mobile home
- ₇ Senior housing or assisted living facility
- ₈ ADU (accessory dwelling unit)
- ₉ Multi-family housing
- ₁₀ Some other type of living arrangement

Q10. Do you own or rent your primary home, or do you have some other type of living arrangement, such as living with a family member or friend?

- ₁ Own → *Go to Question 11*
- ₂ Rent → *Skip to Question 12*
- ₃ Neither own nor rent but live with adult child or others → *Skip to Question 12*

Q11. Do you currently have a mortgage on your residence or is your residence fully paid for?

- ₁ I currently have a mortgage on my residence
- ₂ I have no mortgage; my residence is completely paid for
- ₀ Not sure

Q12. How important is it for you to be able to live independently in your own home as you age?

- ₅ Extremely important
- ₄ Very important
- ₃ Somewhat important
- ₂ Not very important
- ₁ Not at all important

Q13. As you grow older, would you consider sharing your home?

	YES	NO	NOT SURE
a. With a family member or members, not including a spouse	<input type="checkbox"/> ₁	<input type="checkbox"/> ₂	<input type="checkbox"/> ₀
b. With a friend	<input type="checkbox"/> ₁	<input type="checkbox"/> ₂	<input type="checkbox"/> ₀
c. With a stranger, someone I do not know	<input type="checkbox"/> ₁	<input type="checkbox"/> ₂	<input type="checkbox"/> ₀

Q14. Some people find that they need to make modifications to their residence to enable them to reside in their home for long as possible. Does your current residence need any major repairs, modifications, or changes to enable you to stay there for as long as possible?

- ₁ Yes
- ₂ No
- ₀ Not sure

HOMES, PUBLIC BUILDINGS AND SPACES

Q15. How would you rate your community for having each of the following?

	EXCELLENT	VERY GOOD	GOOD	FAIR	POOR	NOT SURE
a. Home modification and repair contractors who are trustworthy, do quality work, and are affordable	<input type="checkbox"/> ₅	<input type="checkbox"/> ₄	<input type="checkbox"/> ₃	<input type="checkbox"/> ₂	<input type="checkbox"/> ₁	<input type="checkbox"/> ₀
b. A home repair service for low-income and older adults that helps with projects such as roof or window repairs	<input type="checkbox"/> ₅	<input type="checkbox"/> ₄	<input type="checkbox"/> ₃	<input type="checkbox"/> ₂	<input type="checkbox"/> ₁	<input type="checkbox"/> ₀
c. Seasonal services, such as lawn-mowing and landscaping, for low-income and older adults	<input type="checkbox"/> ₅	<input type="checkbox"/> ₄	<input type="checkbox"/> ₃	<input type="checkbox"/> ₂	<input type="checkbox"/> ₁	<input type="checkbox"/> ₀



Q16. How would you rate your community for having each of the following?

	EXCELLENT	VERY GOOD	GOOD	FAIR	POOR	NOT SURE
a. Sidewalks that are in good condition, safe for pedestrians, and accessible for people using wheelchairs or other assistive mobility devices	<input type="checkbox"/> ₅	<input type="checkbox"/> ₄	<input type="checkbox"/> ₃	<input type="checkbox"/> ₂	<input type="checkbox"/> ₁	<input type="checkbox"/> ₀
b. Well-lit, accessible, safe streets and intersections for all users	<input type="checkbox"/> ₅	<input type="checkbox"/> ₄	<input type="checkbox"/> ₃	<input type="checkbox"/> ₂	<input type="checkbox"/> ₁	<input type="checkbox"/> ₀
c. Audio and visual pedestrian crossings	<input type="checkbox"/> ₅	<input type="checkbox"/> ₄	<input type="checkbox"/> ₃	<input type="checkbox"/> ₂	<input type="checkbox"/> ₁	<input type="checkbox"/> ₀
d. Separate pathways for bicyclists and pedestrians	<input type="checkbox"/> ₅	<input type="checkbox"/> ₄	<input type="checkbox"/> ₃	<input type="checkbox"/> ₂	<input type="checkbox"/> ₁	<input type="checkbox"/> ₀
e. Well-maintained streets	<input type="checkbox"/> ₅	<input type="checkbox"/> ₄	<input type="checkbox"/> ₃	<input type="checkbox"/> ₂	<input type="checkbox"/> ₁	<input type="checkbox"/> ₀
f. Easy to read traffic signs	<input type="checkbox"/> ₅	<input type="checkbox"/> ₄	<input type="checkbox"/> ₃	<input type="checkbox"/> ₂	<input type="checkbox"/> ₁	<input type="checkbox"/> ₀
g. Enforced speed limits	<input type="checkbox"/> ₅	<input type="checkbox"/> ₄	<input type="checkbox"/> ₃	<input type="checkbox"/> ₂	<input type="checkbox"/> ₁	<input type="checkbox"/> ₀

Q17. How would you rate your community for having each of the following?

	EXCELLENT	VERY GOOD	GOOD	FAIR	POOR	NOT SURE
a. Well-maintained homes and properties	<input type="checkbox"/> ₅	<input type="checkbox"/> ₄	<input type="checkbox"/> ₃	<input type="checkbox"/> ₂	<input type="checkbox"/> ₁	<input type="checkbox"/> ₀
b. Affordable housing options — such as older active adult communities, assisted living and communities with shared facilities and outdoor spaces — for adults of varying income levels	<input type="checkbox"/> ₅	<input type="checkbox"/> ₄	<input type="checkbox"/> ₃	<input type="checkbox"/> ₂	<input type="checkbox"/> ₁	<input type="checkbox"/> ₀
c. Homes that are built with things like a no-step entrance, wider doorways, and first-floor bedrooms and bathrooms	<input type="checkbox"/> ₅	<input type="checkbox"/> ₄	<input type="checkbox"/> ₃	<input type="checkbox"/> ₂	<input type="checkbox"/> ₁	<input type="checkbox"/> ₀
d. Well-maintained, safe, low-income housing	<input type="checkbox"/> ₅	<input type="checkbox"/> ₄	<input type="checkbox"/> ₃	<input type="checkbox"/> ₂	<input type="checkbox"/> ₁	<input type="checkbox"/> ₀
e. Well-maintained parks	<input type="checkbox"/> ₅	<input type="checkbox"/> ₄	<input type="checkbox"/> ₃	<input type="checkbox"/> ₂	<input type="checkbox"/> ₁	<input type="checkbox"/> ₀
f. Safe parks	<input type="checkbox"/> ₅	<input type="checkbox"/> ₄	<input type="checkbox"/> ₃	<input type="checkbox"/> ₂	<input type="checkbox"/> ₁	<input type="checkbox"/> ₀
g. Public buildings and spaces including restrooms that are accessible to people of different physical abilities	<input type="checkbox"/> ₅	<input type="checkbox"/> ₄	<input type="checkbox"/> ₃	<input type="checkbox"/> ₂	<input type="checkbox"/> ₁	<input type="checkbox"/> ₀
h. Enough benches for resting in public areas, including parks, along sidewalks, and around public buildings	<input type="checkbox"/> ₅	<input type="checkbox"/> ₄	<input type="checkbox"/> ₃	<input type="checkbox"/> ₂	<input type="checkbox"/> ₁	<input type="checkbox"/> ₀
i. Conveniently located emergency care centers	<input type="checkbox"/> ₅	<input type="checkbox"/> ₄	<input type="checkbox"/> ₃	<input type="checkbox"/> ₂	<input type="checkbox"/> ₁	<input type="checkbox"/> ₀

Continued →



- j. Well-maintained hospitals and health care facilities ₅ ₄ ₃ ₂ ₁ ₀
- k. Neighborhood Watch programs ₅ ₄ ₃ ₂ ₁ ₀
- l. Conveniently located public parking and handicapped parking ₅ ₄ ₃ ₂ ₁ ₀
- m. Affordable public parking ₅ ₄ ₃ ₂ ₁ ₀

TRANSPORTATION

Q18. How do you usually get around your community for activities including (but not limited to) shopping, errands, medical appointments, socializing?

- | | YES | NO |
|---|---------------------------------------|---------------------------------------|
| a. Walk | <input type="checkbox"/> ₁ | <input type="checkbox"/> ₂ |
| b. Drive yourself | <input type="checkbox"/> ₁ | <input type="checkbox"/> ₂ |
| c. Have others drive you | <input type="checkbox"/> ₁ | <input type="checkbox"/> ₂ |
| d. Take a taxi | <input type="checkbox"/> ₁ | <input type="checkbox"/> ₂ |
| e. Use a ride source company such as Uber or Lyft | <input type="checkbox"/> ₁ | <input type="checkbox"/> ₂ |
| f. Use a special transportation service, such as one for seniors or persons with disabilities | <input type="checkbox"/> ₁ | <input type="checkbox"/> ₂ |
| g. Use public transportation | <input type="checkbox"/> ₁ | <input type="checkbox"/> ₂ |
| h. Ride a bike | <input type="checkbox"/> ₁ | <input type="checkbox"/> ₂ |
| i. Some other way | <input type="checkbox"/> ₁ | <input type="checkbox"/> ₂ |
| j. I do not get out of the house | <input type="checkbox"/> ₁ | <input type="checkbox"/> ₂ |

Q19. How would you rate your community for having each of the following?

- | | EXCELLENT | VERY GOOD | GOOD | FAIR | POOR | NOT SURE |
|--|---------------------------------------|---------------------------------------|---------------------------------------|---------------------------------------|---------------------------------------|---------------------------------------|
| a. Accessible and convenient public transportation | <input type="checkbox"/> ₅ | <input type="checkbox"/> ₄ | <input type="checkbox"/> ₃ | <input type="checkbox"/> ₂ | <input type="checkbox"/> ₁ | <input type="checkbox"/> ₀ |
| b. Affordable public transportation | <input type="checkbox"/> ₅ | <input type="checkbox"/> ₄ | <input type="checkbox"/> ₃ | <input type="checkbox"/> ₂ | <input type="checkbox"/> ₁ | <input type="checkbox"/> ₀ |
| c. Well-maintained public transportation vehicles | <input type="checkbox"/> ₅ | <input type="checkbox"/> ₄ | <input type="checkbox"/> ₃ | <input type="checkbox"/> ₂ | <input type="checkbox"/> ₁ | <input type="checkbox"/> ₀ |
| d. Timely public transportation | <input type="checkbox"/> ₅ | <input type="checkbox"/> ₄ | <input type="checkbox"/> ₃ | <input type="checkbox"/> ₂ | <input type="checkbox"/> ₁ | <input type="checkbox"/> ₀ |
| e. Safe public transportation stops or areas that are accessible to people of varying physical abilities | <input type="checkbox"/> ₅ | <input type="checkbox"/> ₄ | <input type="checkbox"/> ₃ | <input type="checkbox"/> ₂ | <input type="checkbox"/> ₁ | <input type="checkbox"/> ₀ |
| f. Special transportation services for people with disabilities and older adults | <input type="checkbox"/> ₅ | <input type="checkbox"/> ₄ | <input type="checkbox"/> ₃ | <input type="checkbox"/> ₂ | <input type="checkbox"/> ₁ | <input type="checkbox"/> ₀ |



HEALTH AND WELLNESS

Q20. How would you rate your community for having each of the following?

	EXCELLENT	VERY GOOD	GOOD	FAIR	POOR	NOT SURE
a. Well-trained, certified home health care providers	<input type="checkbox"/> ₅	<input type="checkbox"/> ₄	<input type="checkbox"/> ₃	<input type="checkbox"/> ₂	<input type="checkbox"/> ₁	<input type="checkbox"/> ₀
b. Affordable home health care providers	<input type="checkbox"/> ₅	<input type="checkbox"/> ₄	<input type="checkbox"/> ₃	<input type="checkbox"/> ₂	<input type="checkbox"/> ₁	<input type="checkbox"/> ₀
c. A variety of health care professionals including specialists	<input type="checkbox"/> ₅	<input type="checkbox"/> ₄	<input type="checkbox"/> ₃	<input type="checkbox"/> ₂	<input type="checkbox"/> ₁	<input type="checkbox"/> ₀
d. Health care professionals who speak different languages	<input type="checkbox"/> ₅	<input type="checkbox"/> ₄	<input type="checkbox"/> ₃	<input type="checkbox"/> ₂	<input type="checkbox"/> ₁	<input type="checkbox"/> ₀
e. Respectful and helpful hospital and clinic staff	<input type="checkbox"/> ₅	<input type="checkbox"/> ₄	<input type="checkbox"/> ₃	<input type="checkbox"/> ₂	<input type="checkbox"/> ₁	<input type="checkbox"/> ₀

Q21. How would you rate your community for having each of the following?

	EXCELLENT	VERY GOOD	GOOD	FAIR	POOR	NOT SURE
a. Affordable health and wellness programs (such as classes) related to nutrition, smoking cessation, weight control and similar topics	<input type="checkbox"/> ₅	<input type="checkbox"/> ₄	<input type="checkbox"/> ₃	<input type="checkbox"/> ₂	<input type="checkbox"/> ₁	<input type="checkbox"/> ₀
b. Affordable fitness activities that are specifically geared toward older adults	<input type="checkbox"/> ₅	<input type="checkbox"/> ₄	<input type="checkbox"/> ₃	<input type="checkbox"/> ₂	<input type="checkbox"/> ₁	<input type="checkbox"/> ₀
c. Conveniently located health and social services	<input type="checkbox"/> ₅	<input type="checkbox"/> ₄	<input type="checkbox"/> ₃	<input type="checkbox"/> ₂	<input type="checkbox"/> ₁	<input type="checkbox"/> ₀
d. A service that provides people who can help seniors easily find and access health and supportive services	<input type="checkbox"/> ₅	<input type="checkbox"/> ₄	<input type="checkbox"/> ₃	<input type="checkbox"/> ₂	<input type="checkbox"/> ₁	<input type="checkbox"/> ₀
e. Affordable home care services including personal care and housekeeping	<input type="checkbox"/> ₅	<input type="checkbox"/> ₄	<input type="checkbox"/> ₃	<input type="checkbox"/> ₂	<input type="checkbox"/> ₁	<input type="checkbox"/> ₀
f. Easily understandable and helpful local hospital or clinic answering services	<input type="checkbox"/> ₅	<input type="checkbox"/> ₄	<input type="checkbox"/> ₃	<input type="checkbox"/> ₂	<input type="checkbox"/> ₁	<input type="checkbox"/> ₀
g. Access to telehealth care services	<input type="checkbox"/> ₅	<input type="checkbox"/> ₄	<input type="checkbox"/> ₃	<input type="checkbox"/> ₂	<input type="checkbox"/> ₁	<input type="checkbox"/> ₀

SOCIAL PARTICIPATION, INCLUSION AND EDUCATIONAL OPPORTUNITIES

Q22. How often do you have contact with family, friends or neighbors who do not live with you?

- ₇ Everyday
- ₆ Several times a week, but not everyday
- ₅ Once a week
- ₄ Once every 2 or 3 weeks
- ₃ Once a month
- ₂ Less than monthly
- ₁ Never

Q23. How often do you feel the following?

- | | OFTEN | SOMETIMES | RARELY | NEVER |
|--------------------------------------|---------------------------------------|---------------------------------------|---------------------------------------|---------------------------------------|
| a. I lack companionship | <input type="checkbox"/> ₄ | <input type="checkbox"/> ₃ | <input type="checkbox"/> ₂ | <input type="checkbox"/> ₁ |
| b. I feel left out | <input type="checkbox"/> ₄ | <input type="checkbox"/> ₃ | <input type="checkbox"/> ₂ | <input type="checkbox"/> ₁ |
| c. I feel isolated from others | <input type="checkbox"/> ₄ | <input type="checkbox"/> ₃ | <input type="checkbox"/> ₂ | <input type="checkbox"/> ₁ |

Q24. If you were in trouble, do you have friends or family who can help you at any time of the day or night?

- ₁ Yes
- ₂ No

Q25. Do you use any of following community sources for continuing education, self-improvement classes or workshops?

- | | YES | NO |
|--|---------------------------------------|---------------------------------------|
| a. Department of parks and recreation | <input type="checkbox"/> ₁ | <input type="checkbox"/> ₂ |
| b. Faith community | <input type="checkbox"/> ₁ | <input type="checkbox"/> ₂ |
| c. Local organizations or businesses | <input type="checkbox"/> ₁ | <input type="checkbox"/> ₂ |
| d. Community center | <input type="checkbox"/> ₁ | <input type="checkbox"/> ₂ |
| e. Senior center | <input type="checkbox"/> ₁ | <input type="checkbox"/> ₂ |
| f. Offerings through my work | <input type="checkbox"/> ₁ | <input type="checkbox"/> ₂ |
| g. Online programs | <input type="checkbox"/> ₁ | <input type="checkbox"/> ₂ |
| h. Some other source | <input type="checkbox"/> ₁ | <input type="checkbox"/> ₂ |
| i. I do not participate in any continuing education ..
or self-improvement programs | <input type="checkbox"/> ₁ | <input type="checkbox"/> ₂ |

Q26. How would you rate your community for having each of the following?

	EXCELLENT	VERY GOOD	GOOD	FAIR	POOR	NOT SURE
a. Conveniently located entertainment venues	<input type="checkbox"/> ₅	<input type="checkbox"/> ₄	<input type="checkbox"/> ₃	<input type="checkbox"/> ₂	<input type="checkbox"/> ₁	<input type="checkbox"/> ₀
b. Activities geared specifically toward older adults .	<input type="checkbox"/> ₅	<input type="checkbox"/> ₄	<input type="checkbox"/> ₃	<input type="checkbox"/> ₂	<input type="checkbox"/> ₁	<input type="checkbox"/> ₀
c. Activities that offer senior discounts	<input type="checkbox"/> ₅	<input type="checkbox"/> ₄	<input type="checkbox"/> ₃	<input type="checkbox"/> ₂	<input type="checkbox"/> ₁	<input type="checkbox"/> ₀
d. Activities that are affordable to all residents	<input type="checkbox"/> ₅	<input type="checkbox"/> ₄	<input type="checkbox"/> ₃	<input type="checkbox"/> ₂	<input type="checkbox"/> ₁	<input type="checkbox"/> ₀
e. Activities that involve both younger and older people	<input type="checkbox"/> ₅	<input type="checkbox"/> ₄	<input type="checkbox"/> ₃	<input type="checkbox"/> ₂	<input type="checkbox"/> ₁	<input type="checkbox"/> ₀
f. Cultural activities for diverse populations	<input type="checkbox"/> ₅	<input type="checkbox"/> ₄	<input type="checkbox"/> ₃	<input type="checkbox"/> ₂	<input type="checkbox"/> ₁	<input type="checkbox"/> ₀
g. Local schools that involve older adults in events and activities	<input type="checkbox"/> ₅	<input type="checkbox"/> ₄	<input type="checkbox"/> ₃	<input type="checkbox"/> ₂	<input type="checkbox"/> ₁	<input type="checkbox"/> ₀
h. Continuing education classes or social clubs for pursuing new interests, hobbies or passions	<input type="checkbox"/> ₅	<input type="checkbox"/> ₄	<input type="checkbox"/> ₃	<input type="checkbox"/> ₂	<input type="checkbox"/> ₁	<input type="checkbox"/> ₀
i. Driver education or refresher courses	<input type="checkbox"/> ₅	<input type="checkbox"/> ₄	<input type="checkbox"/> ₃	<input type="checkbox"/> ₂	<input type="checkbox"/> ₁	<input type="checkbox"/> ₀
j. Access to reliable and affordable high-speed internet services at home	<input type="checkbox"/> ₅	<input type="checkbox"/> ₄	<input type="checkbox"/> ₃	<input type="checkbox"/> ₂	<input type="checkbox"/> ₁	<input type="checkbox"/> ₀

VOLUNTEERING AND CIVIC ENGAGEMENT

Q27. How would you rate your community for having each of the following?

	EXCELLENT	VERY GOOD	GOOD	FAIR	POOR	NOT SURE
a. A range of volunteer activities to choose from	<input type="checkbox"/> ₅	<input type="checkbox"/> ₄	<input type="checkbox"/> ₃	<input type="checkbox"/> ₂	<input type="checkbox"/> ₁	<input type="checkbox"/> ₀
b. Volunteer training opportunities to help people perform better in their volunteer roles	<input type="checkbox"/> ₅	<input type="checkbox"/> ₄	<input type="checkbox"/> ₃	<input type="checkbox"/> ₂	<input type="checkbox"/> ₁	<input type="checkbox"/> ₀
c. Opportunities for older adults to participate in decision-making bodies, such as community councils or committees	<input type="checkbox"/> ₅	<input type="checkbox"/> ₄	<input type="checkbox"/> ₃	<input type="checkbox"/> ₂	<input type="checkbox"/> ₁	<input type="checkbox"/> ₀
d. Easy to find information on available local volunteer opportunities	<input type="checkbox"/> ₅	<input type="checkbox"/> ₄	<input type="checkbox"/> ₃	<input type="checkbox"/> ₂	<input type="checkbox"/> ₁	<input type="checkbox"/> ₀
e. Transportation to and from volunteer activities . . . for those who need it	<input type="checkbox"/> ₅	<input type="checkbox"/> ₄	<input type="checkbox"/> ₃	<input type="checkbox"/> ₂	<input type="checkbox"/> ₁	<input type="checkbox"/> ₀
f. A range of public in-person events	<input type="checkbox"/> ₅	<input type="checkbox"/> ₄	<input type="checkbox"/> ₃	<input type="checkbox"/> ₂	<input type="checkbox"/> ₁	<input type="checkbox"/> ₀

JOB OPPORTUNITIES

Q28. Which of the following best describes your current employment status?

- ₁ Self-employed, part-time → *Go to Question 29*
- ₂ Self-employed, full-time → *Go to Question 29*
- ₃ Employed, part-time → *Go to Question 29*
- ₄ Employed, full-time → *Go to Question 29*
- ₅ Unemployed, but looking for work → *Go to Question 29*
- ₆ Retired, not working at all → *Skip to Question 30*
- ₇ Not in labor force for other reasons → *Skip to Question 30*

Q29. How likely is it that you will continue to work for as long as possible rather than choosing to retire and no longer work for pay?

- ₅ Extremely likely
- ₄ Very likely
- ₃ Somewhat likely
- ₂ Not very likely
- ₁ Not at all likely
- ₀ Not sure

Q30. How would you rate your community for having each of the following?

	EXCELLENT	VERY GOOD	GOOD	FAIR	POOR	NOT SURE
a. A range of flexible job opportunities for older adults	<input type="checkbox"/> ₅	<input type="checkbox"/> ₄	<input type="checkbox"/> ₃	<input type="checkbox"/> ₂	<input type="checkbox"/> ₁	<input type="checkbox"/> ₀
b. Job training opportunities for older adults who want to learn new job skills within their job or get training in a different field of work	<input type="checkbox"/> ₅	<input type="checkbox"/> ₄	<input type="checkbox"/> ₃	<input type="checkbox"/> ₂	<input type="checkbox"/> ₁	<input type="checkbox"/> ₀
c. Jobs that are adapted to meet the needs of people with disabilities	<input type="checkbox"/> ₅	<input type="checkbox"/> ₄	<input type="checkbox"/> ₃	<input type="checkbox"/> ₂	<input type="checkbox"/> ₁	<input type="checkbox"/> ₀
d. Policies that ensure older adults can continue to have equal opportunity to work for as long as they want or need to regardless of their age	<input type="checkbox"/> ₅	<input type="checkbox"/> ₄	<input type="checkbox"/> ₃	<input type="checkbox"/> ₂	<input type="checkbox"/> ₁	<input type="checkbox"/> ₀

COMMUNITY INFORMATION

Q31. Would you turn to the following resources if you, a family member or friend needed information about services for older adults such as caregiving services, home delivered meals, home repair, medical transport or social activities?

	YES	NO	NOT SURE
a. A local senior center	<input type="checkbox"/> ₁	<input type="checkbox"/> ₂	<input type="checkbox"/> ₀
b. An office of healthy aging (formerly a department of “elderly affairs”)	<input type="checkbox"/> ₁	<input type="checkbox"/> ₂	<input type="checkbox"/> ₀
c. Family or friends	<input type="checkbox"/> ₁	<input type="checkbox"/> ₂	<input type="checkbox"/> ₀
d. Local nonprofit organizations	<input type="checkbox"/> ₁	<input type="checkbox"/> ₂	<input type="checkbox"/> ₀
e. AARP	<input type="checkbox"/> ₁	<input type="checkbox"/> ₂	<input type="checkbox"/> ₀
f. Faith-based organizations including churches or synagogues	<input type="checkbox"/> ₁	<input type="checkbox"/> ₂	<input type="checkbox"/> ₀
g. Internet	<input type="checkbox"/> ₁	<input type="checkbox"/> ₂	<input type="checkbox"/> ₀
h. Your doctor or other health care professional	<input type="checkbox"/> ₁	<input type="checkbox"/> ₂	<input type="checkbox"/> ₀
i. Local government offices such as the health department	<input type="checkbox"/> ₁	<input type="checkbox"/> ₂	<input type="checkbox"/> ₀
j. Library	<input type="checkbox"/> ₁	<input type="checkbox"/> ₂	<input type="checkbox"/> ₀
k. Some other source	<input type="checkbox"/> ₁	<input type="checkbox"/> ₂	<input type="checkbox"/> ₀

Q32. How would you rate your community for having each of the following?

	EXCELLENT	VERY GOOD	GOOD	FAIR	POOR	NOT SURE
a. Access to community information in one central source	<input type="checkbox"/> ₅	<input type="checkbox"/> ₄	<input type="checkbox"/> ₃	<input type="checkbox"/> ₂	<input type="checkbox"/> ₁	<input type="checkbox"/> ₀
b. Clearly displayed, printed community information with large lettering	<input type="checkbox"/> ₅	<input type="checkbox"/> ₄	<input type="checkbox"/> ₃	<input type="checkbox"/> ₂	<input type="checkbox"/> ₁	<input type="checkbox"/> ₀
c. Free access to computers and the internet in public places such as a library, senior center or government building	<input type="checkbox"/> ₅	<input type="checkbox"/> ₄	<input type="checkbox"/> ₃	<input type="checkbox"/> ₂	<input type="checkbox"/> ₁	<input type="checkbox"/> ₀
d. Community information that is delivered in person to people who might have difficulty accessing other sources or may not be able to leave their home	<input type="checkbox"/> ₅	<input type="checkbox"/> ₄	<input type="checkbox"/> ₃	<input type="checkbox"/> ₂	<input type="checkbox"/> ₁	<input type="checkbox"/> ₀
e. Community information that is available in a variety of languages	<input type="checkbox"/> ₅	<input type="checkbox"/> ₄	<input type="checkbox"/> ₃	<input type="checkbox"/> ₂	<input type="checkbox"/> ₁	<input type="checkbox"/> ₀

DEMOGRAPHICS

The following questions are for classification purposes only and will be kept confidential.

D1. What is your gender?

- ₁ Male
- ₂ Female
- ₃ Non-binary
- ₄ Another gender identity

D2. Which term best describes how you currently identify? [Select all that apply.]

- ₁ Straight or Heterosexual
- ₂ Gay or Lesbian
- ₃ Bisexual or Pansexual
- ₄ Asexual
- ₅ Queer
- ₆ Questioning or other
- ₇ Prefer not to say

D3. What is your age in years as of your last birthday? _____

D4. What is your current marital status?

- ₁ Married
- ₂ Not married but living with a partner
- ₃ Separated
- ₄ Divorced
- ₅ Widowed
- ₆ Never married

D5. Are you or your spouse or partner currently a member of AARP?

- ₁ Yes
- ₂ No
- ₀ Not sure

D6. Besides yourself, do any of the following people live in your household?

- | | YES | NO |
|---|---------------------------------------|---------------------------------------|
| a. Child/children under 18 | <input type="checkbox"/> ₁ | <input type="checkbox"/> ₂ |
| b. Child/children 18 or older | <input type="checkbox"/> ₁ | <input type="checkbox"/> ₂ |
| c. Child/children away at college | <input type="checkbox"/> ₁ | <input type="checkbox"/> ₂ |
| d. Parents | <input type="checkbox"/> ₁ | <input type="checkbox"/> ₂ |
| e. Other adult relative or friend 18 or older | <input type="checkbox"/> ₁ | <input type="checkbox"/> ₂ |

D7. In general, how would you rate your health?

- ₅ Excellent
- ₄ Very good
- ₃ Good
- ₂ Fair
- ₁ Poor

D8. Does any disability, handicap, or chronic disease keep you or your spouse or partner from participating fully in work, school, housework, or other activities? [Check only one.]

- ₁ Yes, myself
- ₂ Yes, my spouse or partner
- ₃ Yes, both me and my spouse or partner
- ₄ No

D9. A family caregiver is someone who provides care for an adult loved one who is ill, frail, elderly or has a physical, mental or emotional disability. This care may include helping with meals, household chores, shopping, transportation, personal needs such as bathing or dressing, managing medical care or finances, or even visiting regularly to see how they are doing. This adult need not live with you.

Are you currently a family caregiver providing unpaid care to an adult loved one?

- ₁ Yes → *Skip to Question D10*
- ₂ No → *Skip to Question D11*

D10. How likely is it that you will provide unpaid care to an adult loved one in the future?

- ₅ Extremely likely
- ₄ Very likely
- ₃ Somewhat likely
- ₂ Not very likely
- ₁ Not at all likely

D11. What is the highest level of education you have completed?

- ₁ K-12th grade (no diploma)
- ₂ High school graduate, GED or equivalent
- ₃ Post-high school education/training (no degree)
- ₄ 2-year college degree
- ₅ 4-year college degree
- ₆ Post-graduate study (no degree)
- ₇ Graduate or professional degree(s)

D12. Are you of Hispanic, Spanish or Latino origin or descent?

- ₁ Yes → *Go to Question D13*
- ₂ No → *Skip to Question D14*

D13. If you are Hispanic or Latino, please indicate which language best represents the language you speak at home?

- ₁ English
- ₂ Spanish
- ₃ Do not have a preference

D14. What is your race? [Check all that apply.]

- ₁ Black or African American
- ₂ White or Caucasian
- ₃ Asian
- ₄ American Indian or Alaska Native
- ₅ Native Hawaiian or other Pacific Islander
- ₆ Other, please specify: _____

D15. How concerned are you that cost-of-living increases, over which you have no control, may reduce your standard of living during your retirement years?

- ₁ Very concerned
- ₂ Somewhat concerned
- ₃ Not very concerned
- ₄ Not concerned at all
- ₀ Not sure

D16. What was your annual household income before taxes last year?

- ₁ Less than \$10,000
- ₂ \$10,000 to \$19,999
- ₃ \$20,000 to \$29,999
- ₄ \$30,000 to \$49,999
- ₅ \$50,000 to \$74,999
- ₆ \$75,000 to \$99,999
- ₇ \$100,000 to \$149,999
- ₈ \$150,000 or more

D17. What is your 5-digit zip code? _____

Thank you very much for completing this survey.

Your assistance in providing this information is greatly appreciated.